

Anti-Protein TIC20-II, chloroplastic antibody

Catalog: PHY3605A

Product Information

| | |
|---------------------------------|---|
| Description: | Rabbit polyclonal antibody |
| Background: | TIC20-II is a component of the TIC (translocon at the inner envelope membrane of chloroplasts) protein translocation machinery mediating the protein translocation across the inner envelope of plastids. The Arabidopsis genome encodes four Tic20 homologous proteins, AT1G04940(Tic20-I), AT2G47840(Tic20-II), AT4G03320(Tic20-IV) and AT5G55710(Tic20-V). |
| Synonyms: | TIC20-II, ATTIC20-II, TRANSLOCON AT THE INNER ENVELOPE MEMBRANE OF CHLOROPLASTS 20-II |
| Immunogen: | KLH-conjugated synthetic peptide (13 aa from N terminal section) derived from <i>Arabidopsis thaliana</i> TIC20-II (AT2G47840). |
| Form: | Lyophilized |
| Quantity: | 150 µg |
| Purification: | Immunogen affinity purified |
| Reconstitution: | Reconstitution with 150 µl of 0.01 M sterile PBS. "Note: please spin tube briefly prior to opening it to avoid any losses that might occur from lyophilized material adhering to the cap or sides of the tube". |
| Stability & Storage: | Use a manual defrost freezer and avoid repeated freeze-thaw cycles. 12 months from date of receipt, -20 to -70°C as supplied. 6 months, -20 to -70°C under sterile conditions after reconstitution. 1 month, 2 to 8°C under sterile conditions after reconstitution. |
| Shipping: | The product is shipped at 4°C. Upon receipt, store it immediately at the temperature recommended above. |

Application Information

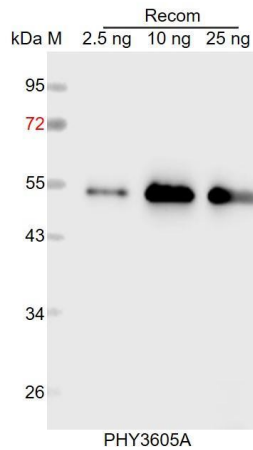
| | |
|--------------------------------|---|
| Recommended Dilution: | Western Blot (1:1000-1:2000) Note: Optimal dilutions/concentrations should be determined by the end user. |
| Expected / apparent MW: | 23 kDa |
| Predicted Reactivity: | Among species analyzed, the sequence of the synthetic peptide used for immunization is 100% homologues with the sequence in <i>Brassica</i> |

Research Use Only

rapa, *Brassica napus*.

For more species homologues information, please contact tech support at tech@phytoab.com.

Application Example



Recom: 2.5 ng, 10 ng and 25 ng recombinant protein containing the peptide for immunization and having a molecular mass of 54 kDa.

Electrophoresis: 12% SDS-PAGE

Transfer: blotting to NC (nitrocellulose) membrane for 1 h.

Blocking: 5% skim milk at RT or 4°C for 1 h.

Primary antibody: 1:1000 dilution overnight at 4°C.

Secondary antibody: 1:10000 dilution using Goat Anti-Rabbit IgG H&L (HRP) (Cat# PHY6000).

Detection: using chemiluminescence substrate and image were captured with CCD camera.