

Anti-Potassium channel KAT3 antibody

Catalog: PHY1331A

Product Information

Description:	Rabbit polyclonal antibody
Background:	In Arabidopsis, the Shaker family comprises nine members, which can be segregated into five phylogenetic groups. Group I (KAT1 (AT5G46240) and KAT2 (AT4G18290)), group II (AKT1 (AT2G26650) and AKT5 (AT4G32500)) and group III (AKT2 (AT4G22200)) can produce homotetrameric hyperpolarization-activated K ⁺ channels when expressed alone in heterologous expression systems. In the same conditions, group V (GORK (AT5G37500), and SKOR (AT3G02850)) can produce homotetrameric depolarization-activated K ⁺ channels. AtKC1, the single member of group IV in Arabidopsis, contributes to the inward K ⁺ conductance, probably in association with AKT1 within hetero-meric channels.
Synonyms:	KAT3, A. THALIANA LOW-K ⁺ -TOLERANT 1, ARABIDOPSIS THALIANA K ⁺ RECTIFYING CHANNEL 1, ATKC1, ATLKT1, KC1, POTASSIUM CHANNEL IN ARABIDOPSIS THALIANA 3
Immunogen:	KLH-conjugated synthetic peptide (14 aa from Central section) derived from <i>Arabidopsis thaliana</i> KAT3 (AT4G32650).
Form:	Lyophilized
Quantity:	150 µg
Purification:	Immunogen affinity purified
Reconstitution:	Reconstitution with 150 µl of 0.01M sterile PBS. "Note: please spin tube briefly prior to opening it to avoid any losses that might occur from lyophilized material adhering to the cap or sides of the tube".
Stability & Storage:	Use a manual defrost freezer and avoid repeated freeze-thaw cycles. 12 months from date of receipt, -20 to -70°C as supplied. 6 months, -20 to -70°C under sterile conditions after reconstitution. 1 month, 2 to 8°C under sterile conditions after reconstitution.
Shipping:	The product is shipped at 4°C. Upon receipt, store it immediately at the temperature recommended above.

Application Information

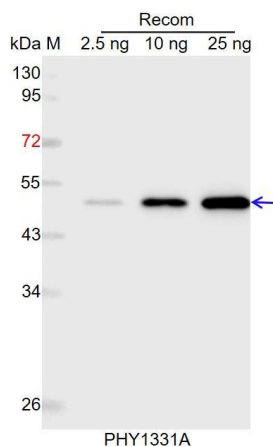
Research Use Only

Recommended Dilution: Western Blot (1:1000-1:2000)
 Note: Optimal dilutions/concentrations should be determined by the end user.

Expected / apparent MW: 76 kDa

Predicted Reactivity: Among species analyzed, the sequence of the synthetic peptide used for immunization is 80-99% homologues with the sequence in *Brassica napus*.
 For more species homologues information, please contact tech support at tech@phytoab.com.

Application Example



Recom: 2.5 ng, 10 ng and 25 ng recombinant protein containing the peptide for immunization and having a molecular mass of 50 kDa.

Electrophoresis: 12% SDS-PAGE

Transfer: blotting to NC (nitrocellulose) membrane for 1 h.

Blocking: 5% skim milk at RT or 4°C for 1 h.

Primary antibody: 1:1000 dilution overnight at 4°C.

Secondary antibody: 1:10000 dilution using Goat Anti-Rabbit IgG H&L (HRP) (Cat# PHY6000).

Detection: using chemiluminescence substrate and image were captured with CCD camera.