

Anti-Respiratory burst oxidase homolog protein F antibody

Catalog: PHY3563A

Product Information

Description:	Rabbit polyclonal antibody
Background:	ATRBOHF interacts with AtrbohD gene to fine tune the spatial control of ROI production and hypersensitive response to cell in and around infection site. ATRBOHF generates reactive oxygen species (ROS) during incompatible interactions with pathogens and is important in the regulation of the hypersensitive response (HR).
Synonyms:	RBOHF, ATRBOHF, ARABIDOPSIS THALIANA RESPIRATORY BURST OXIDASE HOMOLOG F, ATRBOH F, RBOH F, RBOHAP108, RESPIRATORY BURST OXIDASE PROTEIN F
Immunogen:	KLH-conjugated synthetic peptide (15 aa from N terminal section) derived from <i>Arabidopsis thaliana</i> RBOHF (AT1G64060).
Form:	Lyophilized
Quantity:	150 µg
Purification:	Immunogen affinity purified
Reconstitution:	Reconstitution with 150 µl of 0.01 M sterile PBS. "Note: please spin tube briefly prior to opening it to avoid any losses that might occur from lyophilized material adhering to the cap or sides of the tube".
Stability & Storage:	Use a manual defrost freezer and avoid repeated freeze-thaw cycles. 12 months from date of receipt, -20 to -70°C as supplied. 6 months, -20 to -70°C under sterile conditions after reconstitution. 1 month, 2 to 8°C under sterile conditions after reconstitution.
Shipping:	The product is shipped at 4°C. Upon receipt, store it immediately at the temperature recommended above.

Application Information

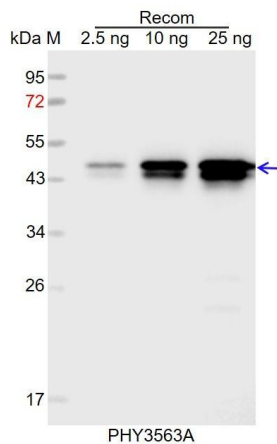
Recommended Dilution:	Western Blot (1:1000-1:2000) Note: Optimal dilutions/concentrations should be determined by the end user.
Expected / apparent MW:	108 kDa

Research Use Only

Predicted Reactivity:

Among species analyzed, the sequence of the synthetic peptide used for immunization is 100% homologues with the sequence in *Solanum tuberosum*, *Brassica rapa*, *Brassica napus*, and 80-99% homologues with the sequence in *Gossypium raimondii*, *Solanum lycopersicum*, *Nicotiana tabacum*, *Populus trichocarpa*, *Vitis vinifera*, *Glycine max*, *Triticum aestivum*, *Hordeum vulgare*, *Medicago truncatula*, *Panicum virgatum*, *Setaria viridis*, *Sorghum bicolor*, *Oryza sativa*, *Zea mays*. For more species homologues information, please contact tech support at tech@phytoab.com.

Application Example



Recom: 2.5 ng, 10 ng and 25 ng recombinant protein containing the peptide for immunization and having a molecular mass of 48 kDa.

Electrophoresis: 12% SDS-PAGE

Transfer: blotting to NC (nitrocellulose) membrane for 1 h.

Blocking: 5% skim milk at RT or 4°C for 1 h.

Primary antibody: 1:1000 dilution overnight at 4°C.

Secondary antibody: 1:10000 dilution using Goat Anti-Rabbit IgG H&L (HRP) (Cat# PHY6000).

Detection: using chemiluminescence substrate and image were captured with CCD camera.