

Anti-Kinesin-like protein KatA/C antibody

Catalog: PHY0967A

Product Information

Description:	Rabbit polyclonal antibody
Background:	Kinesin that supports microtubule movement in an ATP-dependent manner and has a minus-end directed polarity. It plays a crucial role in spindle morphogenesis in male meiosis. KatA is a kinesin-like motor protein heavy chain. In mitosis, KatA is required for normal microtubule accumulation at the spindle poles during prophase and may play a role in spindle assembly during prometaphase.
Synonyms:	KatA/C
Immunogen:	KLH-conjugated synthetic peptide (16 aa from C terminal section) derived from <i>Arabidopsis thaliana</i> KatA (AT5G54670) and KatC (AT4G21270).
Form:	Lyophilized
Quantity:	150 µg
Purification:	Immunogen affinity purified
Reconstitution:	Reconstitution with 150 µl of 0.01 M sterile PBS. "Note: please spin tube briefly prior to opening it to avoid any losses that might occur from lyophilized material adhering to the cap or sides of the tube".
Stability & Storage:	Use a manual defrost freezer and avoid repeated freeze-thaw cycles. 12 months from date of receipt, -20 to -70°C as supplied. 6 months, -20 to -70°C under sterile conditions after reconstitution. 1 month, 2 to 8°C under sterile conditions after reconstitution.
Shipping:	The product is shipped at 4°C. Upon receipt, store it immediately at the temperature recommended above.

Application Information

Recommended Dilution:	Western Blot (1:1000-1:2000) Note: Optimal dilutions/concentrations should be determined by the end user.
Expected / apparent MW:	89 kDa (AT4G21270), 85 kDa (AT5G54670)

Research Use Only

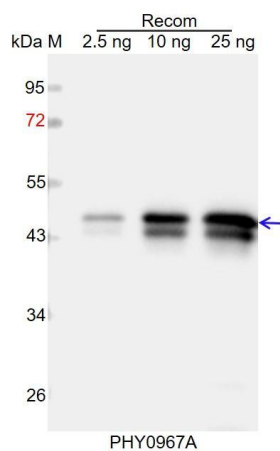
Predicted Reactivity:

Among species analyzed, the sequence of the synthetic peptide used for immunization is 100% homologues with the sequence in *Vitis vinifera*, *Gossypium raimondii*, *Populus trichocarpa*, *Glycine max*, *Spinacia oleracea*, *Medicago truncatula*, *Setaria viridis*, *Panicum virgatum*, *Sorghum bicolor*, *Hordeum vulgare*, *Triticum aestivum*, *Zea mays*, *Cucumis sativus*, *Brassica rapa*, *Brassica napus*, and 80-99% homologues with the sequence in *Oryza sativa*, *Solanum lycopersicum*, *Solanum tuberosum*.

The sequence of the synthetic peptide used for immunization is 94% (15 / 16) homologues with the sequence in ATK5 (AT4G05190) and KATB (AT4G27180), and 81% (13 / 16) homologues with the sequence in AT5G27550.

For more species homologues information, please contact tech support at tech@phytoab.com.

Application Example



Recom: 2.5 ng, 10 ng and 25 ng recombinant protein containing the peptide for immunization and having a molecular mass of 48 kDa.

Electrophoresis: 12% SDS-PAGE

Transfer: blotting to NC (nitrocellulose) membrane for 1 h.

Blocking: 5% skim milk at RT or 4°C for 1 h.

Primary antibody: 1:1000 dilution overnight at 4°C.

Secondary antibody: 1:10000 dilution using Goat Anti-Rabbit IgG H&L (HRP) (Cat# PHY6000).

Detection: using chemiluminescence substrate and image were captured with CCD camera.