

Anti-Ferrochelatase antibody

Catalog: PHY2960A

Product Information

Description:	Rabbit polyclonal antibody
Background:	FC2 is one of two ferrochelatase genes in Arabidopsis. Ferrochelatase is the terminal enzyme of heme biosynthesis. FC-II is speculated to operate in photosynthetic cytochromes.
Synonyms:	FC2, ATFC-II, FC-II, FERROCHELATASE 2
Immunogen:	KLH-conjugated synthetic peptide (18 aa from C terminal section) derived from <i>Arabidopsis thaliana</i> FC2 (AT2G30390).
Form:	Lyophilized
Quantity:	150 µg
Purification:	Immunogen affinity purified
Reconstitution:	Reconstitution with 150 µl of 0.01 M sterile PBS. "Note: please spin tube briefly prior to opening it to avoid any losses that might occur from lyophilized material adhering to the cap or sides of the tube".
Stability & Storage:	Use a manual defrost freezer and avoid repeated freeze-thaw cycles. 12 months from date of receipt, -20 to -70°C as supplied. 6 months, -20 to -70°C under sterile conditions after reconstitution. 1 month, 2 to 8°C under sterile conditions after reconstitution.
Shipping:	The product is shipped at 4°C. Upon receipt, store it immediately at the temperature recommended above.

Application Information

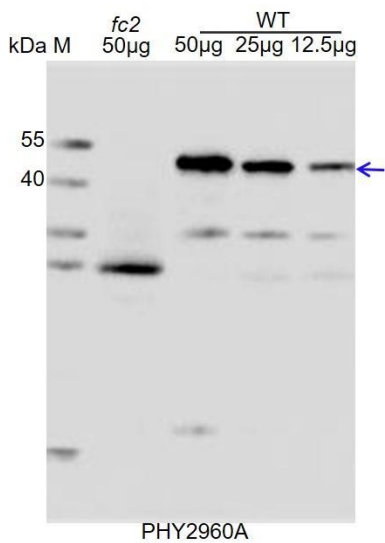
Recommended Dilution:	Western Blot (1:1000-1:2000) Note: Optimal dilutions/concentrations should be determined by the end user.
Expected / apparent MW:	58 / 50 kDa
Confirmed Reactivity:	<i>Arabidopsis thaliana</i>
Predicted Reactivity:	Among species analyzed, the sequence of the synthetic peptide used for immunization is 100% homologues with the sequence in <i>Brassica rapa</i> , <i>Brassica napus</i> , <i>Vitis vinifera</i> , <i>Glycine max</i> , <i>Spinacia oleracea</i> , <i>Oryza sativa</i> , <i>Zea mays</i> , <i>Solanum tuberosum</i> , <i>Solanum</i>

Research Use Only

lycopersicum, Triticum aestivum, Hordeum vulgare, Gossypium raimondii, Medicago truncatula, Cucumis sativus, Populus trichocarpa, Panicum virgatum, Nicotiana tabacum, Setaria viridis, Sorghum bicolor.

For more species homologues information, please contact tech support at tech@phytoab.com.

Application Example Example1:



fc2: thylakoid membrane protein from a *fc2* of *Arabidopsis thaliana* containing 50 µg of chlorophyll.

WT: thylakoid membrane protein from *Arabidopsis thaliana* containing 50 µg, 25 µg and 12.5 µg of chlorophyll, respectively.

Electrophoresis: 12% SDS-PAGE

Transfer: blotting to NC (nitrocellulose) membrane for 1 h.

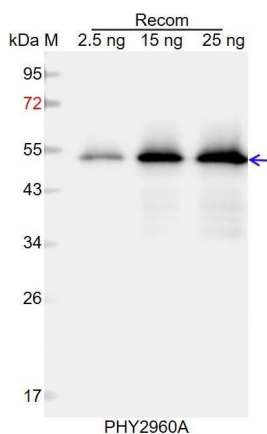
Blocking: 5% skim milk at RT or 4°C for 1 h.

Primary antibody: 1:1000 dilution overnight at 4°C.

Secondary antibody: 1:10000 dilution using Goat Anti-Rabbit IgG H&L (HRP) (Cat# PHY6000).

Detection: using chemiluminescence substrate and image were captured with CCD camera.

Example2:



Recom: 2.5 ng, 15 ng and 25 ng recombinant protein containing the peptide for immunization and having a molecular mass of 53 kDa.

Electrophoresis: 12% SDS-PAGE

Transfer: blotting to NC (nitrocellulose) membrane for 1 h.

Blocking: 5% skim milk at RT or 4°C for 1 h.

Primary antibody: 1:1000 dilution overnight at 4°C.

Secondary antibody: 1:10000 dilution using Goat Anti-Rabbit IgG H&L (HRP) (Cat# PHY6000).

Detection: using chemiluminescence substrate and image were captured with CCD camera.