

Anti-Shaggy-related protein kinase eta, C-terminal antibody

Catalog: PHY3568A

Product Information

Description:	Rabbit polyclonal antibody
Background:	BIN2 is a member of the ATSK (shaggy-like kinase) family. BIN2 functions in the cross-talk between auxin and brassinosteroid signaling pathways. BIN2 regulates root epidermal cell fate specification by phosphorylating EGL3 and TTG1. BIN2-mediated phosphorylation appears to promote BZR1 export from the nucleus. KIB1 interacts with BIN2 blocking its interaction with substrates and promotes BIN2 degradation.
Synonyms:	BIN2, ATSK21, BRASSINOSTEROID-INSENSITIVE 2, DWARF 12, DWF12, SHAGGY-LIKE KINASE 21, SK21, UCU1, ULTRACURVATA 1
Immunogen:	KLH-conjugated synthetic peptide (15 aa from C terminal section) derived from <i>Arabidopsis thaliana</i> BIN2 (AT4G18710).
Form:	Lyophilized
Quantity:	150 µg
Purification:	Immunogen affinity purified
Reconstitution:	Reconstitution with 150 µl of 0.01 M sterile PBS. "Note: please spin tube briefly prior to opening it to avoid any losses that might occur from lyophilized material adhering to the cap or sides of the tube".
Stability & Storage:	Use a manual defrost freezer and avoid repeated freeze-thaw cycles. 12 months from date of receipt, -20 to -70°C as supplied. 6 months, -20 to -70°C under sterile conditions after reconstitution. 1 month, 2 to 8°C under sterile conditions after reconstitution.
Shipping:	The product is shipped at 4°C. Upon receipt, store it immediately at the temperature recommended above.

Application Information

Recommended Dilution:	Western Blot (1:1000-1:2000) Note: Optimal dilutions/concentrations should be determined by the end user.
Expected / apparent MW:	43 kDa

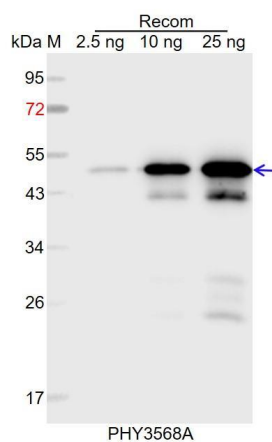
Research Use Only

Predicted Reactivity:

Among species analyzed, the sequence of the synthetic peptide used for immunization is 80-99% homologues with the sequence in *Brassica rapa*, *Brassica napus*, *Vitis vinifera*, *Glycine max*, *Medicago truncatula*, *Cucumis sativus*, *Populus trichocarpa*.

For more species homologues information, please contact tech support at tech@phytoab.com.

Application Example



Recom: 2.5 ng, 10 ng and 25 ng recombinant protein containing the peptide for immunization and having a molecular mass of 50 kDa.

Electrophoresis: 12% SDS-PAGE

Transfer: blotting to NC (nitrocellulose) membrane for 1 h.

Blocking: 5% skim milk at RT or 4°C for 1 h.

Primary antibody: 1:1000 dilution overnight at 4°C.

Secondary antibody: 1:10000 dilution using Goat Anti-Rabbit IgG H&L (HRP) (Cat# PHY6000).

Detection: using chemiluminescence substrate and image were captured with CCD camera.