

Anti-CBL-interacting serine/threonine-protein kinase 11 antibody

Catalog: PHY3531A

Product Information

Description:	Rabbit polyclonal antibody
Background:	SIP4 is a SOS2-like protein kinase that is a member of the CBL-interacting protein kinase family. Loss of function mutants show a decrease in sensitivity to high pH. Phosphorylates AHA2, a plasma membrane H ⁺ ATPase. This phosphorylation appears to regulate the activity of the proton transporter.
Synonyms:	SIP4, CBL-INTERACTING PROTEIN KINASE 11, CIPK11, PKS5, PROTEIN KINASE SOS2-LIKE 5, SNF1-RELATED PROTEIN KINASE 3.22, SNRK3.22, SOS3-INTERACTING PROTEIN 4
Immunogen:	KLH-conjugated synthetic peptide (14 aa from C terminal section) derived from <i>Arabidopsis thaliana</i> SIP4 (AT2G30360).
Form:	Lyophilized
Quantity:	150 µg
Purification:	Immunogen affinity purified
Reconstitution:	Reconstitution with 150 µl of 0.01 M sterile PBS. "Note: please spin tube briefly prior to opening it to avoid any losses that might occur from lyophilized material adhering to the cap or sides of the tube".
Stability &	Use a manual defrost freezer and avoid repeated freeze-thaw cycles.
Storage:	12 months from date of receipt, -20 to -70°C as supplied. 6 months, -20 to -70°C under sterile conditions after reconstitution. 1 month, 2 to 8°C under sterile conditions after reconstitution.
Shipping:	The product is shipped at 4°C. Upon receipt, store it immediately at the temperature recommended above.

Application Information

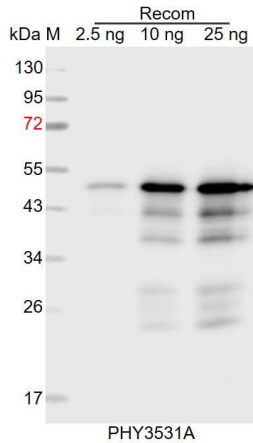
Recommended Dilution:	Western Blot (1:1000-1:2000) Note: Optimal dilutions/concentrations should be determined by the end user.
Expected / apparent MW:	49 kDa

Research Use Only

Predicted Reactivity:

For more species homologues information, please contact tech support at tech@phytoab.com.

Application Example



Recom: 2.5 ng, 10 ng and 25 ng recombinant protein containing the peptide for immunization and having a molecular mass of 50 kDa.

Electrophoresis: 12% SDS-PAGE

Transfer: blotting to NC (nitrocellulose) membrane for 1 h.

Blocking: 5% skim milk at RT or 4°C for 1 h.

Primary antibody: 1:1000 dilution overnight at 4°C.

Secondary antibody: 1:10000 dilution using Goat Anti-Rabbit IgG H&L (HRP) (Cat# PHY6000).

Detection: using chemiluminescence substrate and image were captured with CCD camera.