

Anti-Mitogen-activated protein kinase kinase 5, N-terminal antibody

Catalog: PHY3530A

Product Information

Description:	Rabbit polyclonal antibody
Background:	MKK5 is a mitogen-activated kinase kinase, dual specific protein kinase that is expressed in vegetative tissues and floral buds. Involved in innate immunity. This protein activates MPK3/MPK6 and early-defense genes redundantly with MKK4. In plants with both MKK5 and MKK4 levels reduced by RNAi plants, floral organs do not abscise suggesting a role for both proteins in mediating floral organ abscission. MKK5 is part of a positive feedback loop that regulates HAE expression in floral receptacles.
Synonyms:	MKK5, ARABIDOPSIS THALIANA MITOGEN-ACTIVATED PROTEIN KINASE KINASE 5, ATMAP2K_ALPHA, ATMEK5, ATMKK5, MAP KINASE KINASE 5, MAP2K_A, MEK5
Immunogen:	KLH-conjugated synthetic peptide (14 aa from N terminal section) derived from <i>Arabidopsis thaliana</i> MKK5 (AT3G21220).
Form:	Lyophilized
Quantity:	150 µg
Purification:	Immunogen affinity purified
Reconstitution:	Reconstitution with 150 µl of 0.01 M sterile PBS. "Note: please spin tube briefly prior to opening it to avoid any losses that might occur from lyophilized material adhering to the cap or sides of the tube".
Stability &	Use a manual defrost freezer and avoid repeated freeze-thaw cycles.
Storage:	12 months from date of receipt, -20 to -70°C as supplied. 6 months, -20 to -70°C under sterile conditions after reconstitution. 1 month, 2 to 8°C under sterile conditions after reconstitution.
Shipping:	The product is shipped at 4°C. Upon receipt, store it immediately at the temperature recommended above.

Application Information

Recommended Dilution:	Western Blot (1:1000-1:2000) Note: Optimal dilutions/concentrations should be determined by the
------------------------------	--

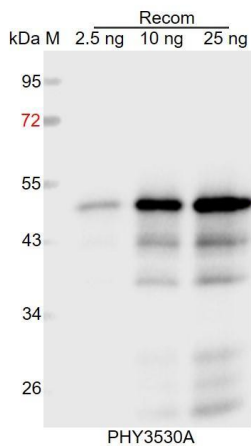
Research Use Only

end user.

Expected / apparent MW: 38 kDa

Predicted Reactivity: For more species homologues information, please contact tech support at tech@phytoab.com.

Application Example



Recom: 2.5 ng, 10 ng and 25 ng recombinant protein containing the peptide for immunization and having a molecular mass of 50 kDa.

Electrophoresis: 12% SDS-PAGE

Transfer: blotting to NC (nitrocellulose) membrane for 1 h.

Blocking: 5% skim milk at RT or 4°C for 1 h.

Primary antibody: 1:1000 dilution overnight at 4°C.

Secondary antibody: 1:10000 dilution using Goat Anti-Rabbit IgG H&L (HRP) (Cat# PHY6000).

Detection: using chemiluminescence substrate and image were captured with CCD camera.