

Anti-Cell division control protein 48 homolog antibody

Catalog: PHY2509A

Product Information

| | |
|------------------------|---|
| Description: | Rabbit polyclonal antibody |
| Background: | CDC48 is a member of AAA-type ATPases gene family, which encodes a cell division cycle protein. Expressed throughout the plant in regions of cell division. Within the cell, sub-cellular localization varies depending on the stage of the cell cycle. Mutants in which the expression of CDC48A is altered show defects in cytokinesis, cell expansion and cell differentiation. The mRNA is cell-to-cell mobile. |
| Synonyms: | CDC48, ATCDC48, CELL DIVISION CYCLE 48 |
| Immunogen: | KLH-conjugated synthetic peptide (16 aa from Central section) derived from <i>Arabidopsis thaliana</i> CDC48A (AT3G09840), CDC48D (AT3G53230), CDC48E (AT5G03340). |
| Form: | Lyophilized |
| Quantity: | 150 µg |
| Purification: | Immunogen affinity purified |
| Reconstitution: | Reconstitution with 150 µl of 0.01 M sterile PBS. "Note: please spin tube briefly prior to opening it to avoid any losses that might occur from lyophilized material adhering to the cap or sides of the tube". |
| Stability & | Use a manual defrost freezer and avoid repeated freeze-thaw cycles. |
| Storage: | 12 months from date of receipt, -20 to -70°C as supplied. 6 months, -20 to -70°C under sterile conditions after reconstitution. 1 month, 2 to 8°C under sterile conditions after reconstitution. |
| Shipping: | The product is shipped at 4°C. Upon receipt, store it immediately at the temperature recommended above. |

Application Information

| | |
|--------------------------------|--|
| Recommended Dilution: | Western Blot (1:1000-1:2000) Note: Optimal dilutions/concentrations should be determined by the end user. |
| Expected / apparent MW: | 89 kDa |

Research Use Only

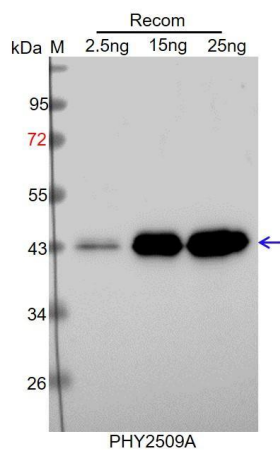
Predicted Reactivity:

Among species analyzed, the sequence of the synthetic peptide used for immunization is 100% homologues with the sequence in *Brassica napus*, *Brassica rapa*, *Solanum tuberosum*, *Solanum lycopersicum*, *Medicago truncatula*, *Nicotiana tabacum*, *Spinacia oleracea*, and 80-99% homologues with the sequence in *Setaria viridis*, *Vitis vinifera*, *Zea mays*, *Triticum aestivum*, *Glycine max*, *Sorghum bicolor*, *Physcomitrium patens*, *Cucumis sativus*, *Panicum virgatum*, *Hordeum vulgare*, *Populus trichocarpa*.

For more species homologues information, please contact tech support at tech@phytoab.com.

Application Example

Example1:



Recom: 2.5 ng, 15 ng and 25 ng recombinant protein containing the peptide for immunization and having a molecular mass of 43 kDa.

Electrophoresis: 12% SDS-PAGE

Transfer: blotting to NC (nitrocellulose) membrane for 1 h.

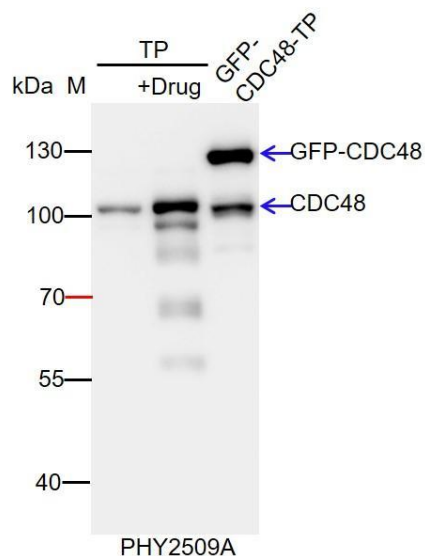
Blocking: 5% skim milk at RT or 4°C for 1 h.

Primary antibody: 1:1000 dilution overnight at 4°C.

Secondary antibody: 1:10000 dilution using Goat Anti-Rabbit IgG H&L (HRP) (Cat# PHY6000).

Detection: using chemiluminescence substrate and image were captured with CCD camera.

Example2:



TP: 15 ug total protein from *Arabidopsis thaliana* whole seedling.

TP+Drug: 15 ug total protein from *Arabidopsis thaliana* whole seedling treated with Drug for 16 hr.

GFP-CDC48-TP: 15 ug total protein from GFP-CDC48 transgenic *Arabidopsis thaliana* whole seedling.

Electrophoresis: 10% SDS-PAGE

Transfer: blotting to NC (nitrocellulose) membrane for 3 h.

Blocking: 10% skim milk at RT or 4°C for 1 h.

Primary antibody: 1:3000 dilution overnight at 4°C.

Secondary antibody: 1:5000 dilution using Goat Anti-Rabbit IgG H&L (HRP) (Cat# PHY6000).

Detection: using chemiluminescence substrate and image were captured with CCD camera.