

Anti- Vacuolar-processing enzyme beta-isozyme antibody

Catalog: PHY0904A

Product Information

Description:	Rabbit polyclonal antibody
Background:	β VPE is belonging to a novel group of cysteine proteases that is expressed specifically in seeds and is essential for the proper processing of storage proteins. In Arabidopsis, the VPE family has been described as having three members (α VPE (AT2G25940), β VPE (AT1G62710), and γ VPE (AT4G32940).
Synonyms:	β VPE, BETA VACUOLAR PROCESSING ENZYME, BETA-VPE, BETAVPE
Immunogen:	KLH-conjugated synthetic peptide (18 aa from N terminal section) derived from <i>Arabidopsis thaliana</i> β VPE (AT1G62710).
Form:	Lyophilized
Quantity:	150 μ g
Purification:	Immunogen affinity purified
Reconstitution:	Reconstitution with 150 μ l of 0.01 M sterile PBS. "Note: please spin tube briefly prior to opening it to avoid any losses that might occur from lyophilized material adhering to the cap or sides of the tube".
Stability & Storage:	Use a manual defrost freezer and avoid repeated freeze-thaw cycles. 12 months from date of receipt, -20 to -70°C as supplied. 6 months, -20 to -70°C under sterile conditions after reconstitution. 1 month, 2 to 8°C under sterile conditions after reconstitution.
Shipping:	The product is shipped at 4°C. Upon receipt, store it immediately at the temperature recommended above.
Reference:	Gruis DF, et al., Plant Cell 2002, 14; 2863 – 2882.

Application Information

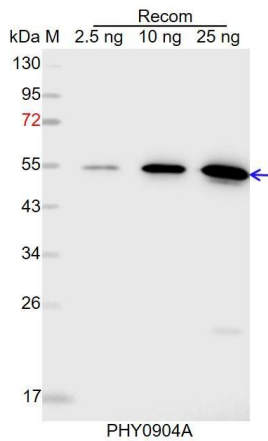
Recommended Dilution:	Western Blot (1:1000-1:2000) Note: Optimal dilutions/concentrations should be determined by the end user.
Expected / apparent MW:	54 kDa

Research Use Only

Predicted Reactivity:

For more species homologues information, please contact tech support at tech@phytoab.com.

Application Example



Recom: 2.5 ng, 10 ng and 25 ng recombinant protein containing the peptide for immunization and having a molecular mass of 54 kDa.

Electrophoresis: 12% SDS-PAGE

Transfer: blotting to NC (nitrocellulose) membrane for 1 h.

Blocking: 5% skim milk at RT or 4°C for 1 h.

Primary antibody: 1:1000 dilution overnight at 4°C.

Secondary antibody: 1:10000 dilution using Goat Anti-Rabbit IgG H&L (HRP) (Cat# PHY6000).

Detection: using chemiluminescence substrate and image were captured with CCD camera.