

# Anti-DEAD-box ATP-dependent RNA helicase 9 antibody

Catalog: PHY0815A

## Product Information

<b>Description:</b>	Rabbit polyclonal antibody
<b>Background:</b>	PMH1 is similarity to DEAD-box RNA helicases. It's involved in drought, salt and cold stress responses. The mitochondrial DEAD-box proteins is included PMH1 (AT3G22310) and PMH2 (AT3G22330). And PMH1 and PMH2 are very similar to each other, with 77% identical amino acids, both carrying a Ser/Gly-rich C terminus.
<b>Synonyms:</b>	PMH1, RH9, ATRH9, ATG of PMH1, PUTATIVE MITOCHONDRIAL RNA HELICASE 1, RNA HELICASE 9
<b>Immunogen:</b>	KLH-conjugated synthetic peptide (15 aa from C terminal section) derived from <i>Arabidopsis thaliana</i> PMH1 (AT3G22310).
<b>Form:</b>	Lyophilized
<b>Quantity:</b>	150 µg
<b>Purification:</b>	Immunogen affinity purified
<b>Reconstitution:</b>	Reconstitution with 150µl of 0.01 M sterile PBS. "Note: please spin tube briefly prior to opening it to avoid any losses that might occur from lyophilized material adhering to the cap or sides of the tube".
<b>Stability &amp; Storage:</b>	Use a manual defrost freezer and avoid repeated freeze-thaw cycles. 12 months from date of receipt, -20 to -70°C as supplied. 6 months, -20 to -70°C under sterile conditions after reconstitution. 1 month, 2 to 8°C under sterile conditions after reconstitution.
<b>Shipping:</b>	The product is shipped at 4°C. Upon receipt, store it immediately at the temperature recommended above.
<b>Reference:</b>	Matthes et al., Plant Physiology 2007, 145; 1637–1646.

## Application Information

<b>Recommended Dilution:</b>	Western Blot (1:1000-1:2000) Note: Optimal dilutions/concentrations should be determined by the end user.
<b>Expected / apparent MW:</b>	64 kDa

Research Use Only

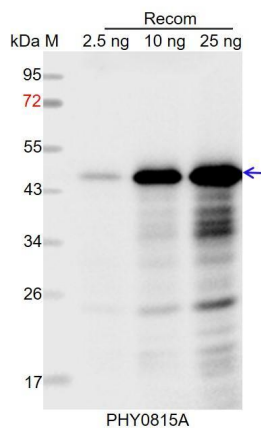
### Predicted Reactivity:

Among species analyzed, the sequence of the synthetic peptide used for immunization is 80-99% homologues with the sequence in *Brassica napus*, *Brassica rapa*, *Setaria viridis*, *Vitis vinifera*, *Gossypium raimondii*, *Panicum virgatum*, *Zea mays*, *Medicago truncatula*, *Glycine max*, *Cucumis sativus*, *Hordeum vulgare*, *Triticum aestivum*, *Oryza sativa*, *Sorghum bicolor*.

The sequence of the synthetic peptide used for immunization is 86% homologues with the sequence in PMH2 (AT3G22330).

For more species homologues information, please contact tech support at [tech@phytoab.com](mailto:tech@phytoab.com).

### Application Example



Recom: 2.5 ng, 10 ng and 25 ng recombinant protein containing the peptide for immunization and having a molecular mass of 48 kDa.

**Electrophoresis:** 12% SDS-PAGE

**Transfer:** blotting to NC (nitrocellulose) membrane for 1 h.

**Blocking:** 5% skim milk at RT or 4°C for 1 h.

**Primary antibody:** 1:1000 dilution overnight at 4°C.

**Secondary antibody:** 1:10000 dilution using Goat Anti-Rabbit IgG H&L (HRP) (Cat# PHY6000).

**Detection:** using chemiluminescence substrate and image were captured with CCD camera.