

Anti-Low Quantum Yield of photosystem II 1, C-terminal antibody

Catalog: PHY0482S

Product Information

Description:	Rabbit polyclonal antibody
Background:	LQY1 is a Zn finger protein and shows disulfide isomerase activity in the chloroplast. LQY1 is mainly localized in stromal thylakoids and may be involved in maintaining PSII activity under high light by regulating repair and reassembly of PSII complexes. The absence of the LQY1 protein accelerates turnover and synthesis of PSII reaction center protein D1.
Synonyms:	LQY1, LOW QUANTUM YIELD OF PHOTOSYSTEM II 1
Immunogen:	KLH-conjugated synthetic peptide (18 aa from C terminal section) derived from <i>Arabidopsis thaliana</i> LQY1 (AT1G75690).
Form:	Lyophilized
Quantity:	150 µg
Purification:	Serum Peptide affinity form antibody available upon request at info@phytoab.com .
Reconstitution:	Reconstitution with 150 µl of sterile water. "Note: please spin tube briefly prior to opening it to avoid any losses that might occur from lyophilized material adhering to the cap or sides of the tube".
Stability & Storage:	Use a manual defrost freezer and avoid repeated freeze-thaw cycles. 12 months from date of receipt, -20 to -70°C as supplied. 6 months, -20 to -70°C under sterile conditions after reconstitution. 1 month, 2 to 8°C under sterile conditions after reconstitution.
Shipping:	The product is shipped at 4°C. Upon receipt, store it immediately at the temperature recommended above.

Application Information

Recommended Dilution:	Western Blot (1:1000-1:2000) Note: Optimal dilutions/concentrations should be determined by the end user.
Expected / apparent MW:	16 kDa

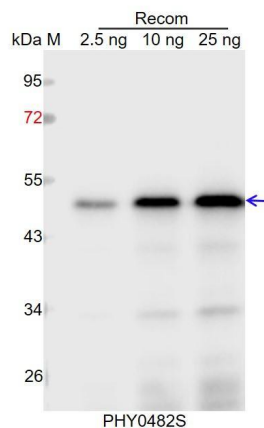
Research Use Only

Predicted Reactivity:

Among species analyzed, the sequence of the synthetic peptide used for immunization is 100% homologues with the sequence in *Brassica rapa*, *Brassica napus*, 80-99% homologues with the sequence in *Glycine max*, *Panicum virgatum*, *Vitis vinifera*, *Populus trichocarpa*, *Solanum tuberosum*, *Nicotiana tabacum*, *Solanum lycopersicum*, *Spinacia oleracea*, *Triticum aestivum*, *Hordeum vulgare subsp. vulgare*, *Medicago truncatula*, *Cucumis sativus*, *Gossypium raimondii*, *Oryza sativa Japonica Group*, *Setaria viridis*, *Sorghum bicolor*, *Zea mays*, *Physcomitrium patens*.

For more species homologues information, please contact tech support at tech@phytoab.com.

Application Example



Recom: 2.5 ng, 10 ng and 25 ng recombinant protein containing the peptide for immunization and having a molecular mass of 50 kDa.

Electrophoresis: 12% SDS-PAGE

Transfer: blotting to NC (nitrocellulose) membrane for 1 h.

Blocking: 5% skim milk at RT or 4°C for 1 h.

Primary antibody: 1:1000 dilution overnight at 4°C.

Secondary antibody: 1:10000 dilution using Goat Anti-Rabbit IgG H&L (HRP) (Cat# PHY6000).

Detection: using chemiluminescence substrate and image were captured with CCD camera.