

# Anti-Photosystem II protein D1 2, C-terminal antibody

Catalog: PHY5268S

## Product Information

<b>Description:</b>	Rabbit polyclonal antibody
<b>Background:</b>	Photosystem II (PSII) is a light-driven water:plastoquinone oxidoreductase that uses light energy to abstract electrons from H <sub>2</sub> O, generating O <sub>2</sub> and a proton gradient subsequently used for ATP formation. It consists of a core antenna complex that captures photons, and an electron transfer chain that converts photonic excitation into a charge separation.
<b>Synonyms:</b>	PsbA2
<b>Immunogen:</b>	KLH-conjugated synthetic peptide (15 aa from C terminal section) derived from <i>Synechocystis sp.</i> PCC 6803 PsbA2 (slr1311).
<b>Form:</b>	Lyophilized
<b>Quantity:</b>	150 µg
<b>Purification:</b>	Serum Peptide affinity form antibody available upon request at <a href="mailto:info@phytoab.com">info@phytoab.com</a> .
<b>Reconstitution:</b>	Reconstitution with 150 µl of sterile water. "Note: please spin tube briefly prior to opening it to avoid any losses that might occur from lyophilized material adhering to the cap or sides of the tube".
<b>Stability &amp; Storage:</b>	Use a manual defrost freezer and avoid repeated freeze-thaw cycles. 12 months from date of receipt, -20 to -70°C as supplied. 6 months, -20 to -70°C under sterile conditions after reconstitution. 1 month, 2 to 8°C under sterile conditions after reconstitution.
<b>Shipping:</b>	The product is shipped at 4°C. Upon receipt, store it immediately at the temperature recommended above.

## Application Information

<b>Recommended Dilution:</b>	Western Blot (1:1000-1:2000) Note: Optimal dilutions/concentrations should be determined by the end user.
<b>Expected / apparent MW:</b>	40 / 30 kDa
<b>Confirmed Reactivity:</b>	<i>Synechocystis sp.</i> PCC 6803

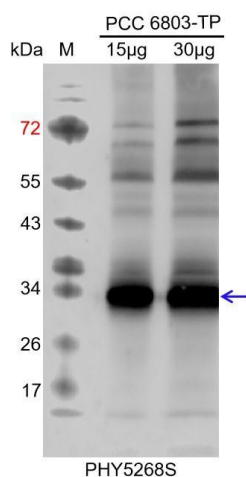
Research Use Only

### Predicted Reactivity:

Among species analyzed, the sequence of the synthetic peptide used for immunization is 100% homologues with the sequence in *Nicotiana tabacum*, *Arabidopsis thaliana*, *Brassica napus*, *Setaria viridis*, *Hordeum vulgare*, *Oryza sativa*, *Medicago truncatula*, *Synechococcus elongatus* PCC 7942, *Vitis vinifera*, *Gossypium raimondii*, *Glycine max*, *Triticum aestivum*, *Brassica rapa*, *Populus trichocarpa*, *Cucumis sativus*, *Panicum virgatum*, *Chlamydomonas reinhardtii*, *Spinacia oleracea*, *Solanum lycopersicum*, *Zea mays*, *Physcomitrella patens*.

For homologues with other species especially algae, please contact tech support at [tech@phytoab.com](mailto:tech@phytoab.com).

### Application Example



PCC 6803-TP: 15 µg and 30 µg whole-cell lysate protein from WT of *Synechocystis sp.* PCC 6803, respectively.

**Electrophoresis:** 15% SDS-Urea-PAGE

**Transfer:** blotting to NC (nitrocellulose) membrane for 1.5 h.

**Blocking:** 5% skim milk at RT or 4°C for 2 h.

**Primary antibody:** 1:1000 dilution overnight at 4°C.

**Secondary antibody:** 1:10000 dilution using Goat Anti-Rabbit IgG H&L (HRP) (Cat# PHY6000).

**Detection:** using chemiluminescence substrate and image were captured with CCD camera.