

Anti-Translocase of chloroplast 159, chloroplastic antibody

Catalog: PHY3211A

Product Information

Description:	Rabbit polyclonal antibody
Background:	TOC159 is an integral membrane GTPase that functions as a transit-sequence receptor required for the import of proteins necessary for chloroplast biogenesis. It located in the outer chloroplast membrane.
Synonyms:	TOC159, ATTOC159, PLASTID PROTEIN IMPORT 2, PPI2, TOC160, TOC86, TRANSLOCON AT THE OUTER ENVELOPE MEMBRANE OF CHLOROPLASTS 159, TRANSLOCON AT THE OUTER ENVELOPE MEMBRANE OF CHLOROPLASTS 160, TRANSLOCON AT THE OUTER ENVELOPE MEMBRANE OF CHLOROPLASTS 86
Immunogen:	KLH-conjugated synthetic peptide (18 aa from C terminal section) derived from <i>Arabidopsis thaliana</i> TOC159 (AT4G02510).
Form:	Lyophilized
Quantity:	150 µg
Purification:	Immunogen affinity purified
Reconstitution:	Reconstitution with 150 µl of 0.01 M sterile PBS. "Note: please spin tube briefly prior to opening it to avoid any losses that might occur from lyophilized material adhering to the cap or sides of the tube".
Stability & Storage:	Use a manual defrost freezer and avoid repeated freeze-thaw cycles. 12 months from date of receipt, -20 to -70°C as supplied. 6 months, -20 to -70°C under sterile conditions after reconstitution. 1 month, 2 to 8°C under sterile conditions after reconstitution.
Shipping:	The product is shipped at 4°C. Upon receipt, store it immediately at the temperature recommended above.

Application Information

Recommended Dilution:	Western Blot (1:1000-1:2000) Note: Optimal dilutions/concentrations should be determined by the end user.
Expected / apparent MW:	161 kDa

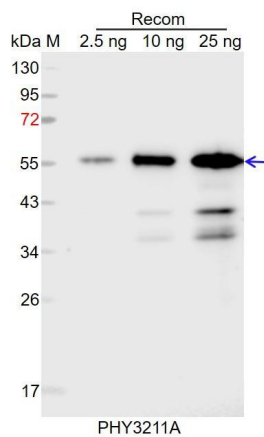
Research Use Only

Predicted Reactivity:

Among species analyzed, the sequence of the synthetic peptide used for immunization is 100% homologues with the sequence in *Cucumis sativus*, *Nicotiana tabacum*, *Gossypium raimondii*, *Glycine max*, *Brassica napus*, *Brassica rapa*, and 80-99% homologues with the sequence in *Triticum aestivum*, *Hordeum vulgare*, *Zea mays*, *Panicum virgatum*, *Sorghum bicolor*, *Solanum tuberosum*, *Setaria viridis*, *Oryza sativa*, *Populus trichocarpa*, *Vitis vinifera*.

For more species homologues information, please contact tech support at tech@phytoab.com.

Application Example



Recom: 2.5 ng, 10 ng and 25 ng recombinant protein containing the peptide for immunization and having a molecular mass of 58 kDa.

Electrophoresis: 12% SDS-PAGE

Transfer: blotting to NC (nitrocellulose) membrane for 1 h.

Blocking: 5% skim milk at RT or 4°C for 1 h.

Primary antibody: 1:1000 dilution overnight at 4°C.

Secondary antibody: 1:10000 dilution using Goat Anti-Rabbit IgG H&L (HRP) (Cat# PHY6000).

Detection: using chemiluminescence substrate and image were captured with CCD camera.