

Anti-Exocyst complex component SEC8, N-terminal antibody

Catalog: PHY0817A

Product Information

Description:	Rabbit polyclonal antibody
Background:	SEC8 is a subunit of the Putative Arabidopsis Exocyst Complex which plays important roles in plant cell morphogenesis. The exocyst complex consists of eight subunits: SEC3a/b (AT1G47550, AT1G47560), SEC5a/b (AT1G76850, AT1G21170), SEC6 (AT1G71820), SEC8 (AT3G10380), SEC10 (AT5G12370), SEC15a/b (AT3G56640, AT4G02350), EXO70 (AT5G03540), and EXO84a/b/c (AT1G10385, AT5G49830, AT1G10180).
Synonyms:	SEC8, ATSEC8, SUBUNIT OF EXOCYST COMPLEX 8
Immunogen:	KLH-conjugated synthetic peptide (15 aa from N terminal section) derived from <i>Arabidopsis thaliana</i> SEC8 (AT3G10380).
Form:	Lyophilized
Quantity:	150 µg
Purification:	Immunogen affinity purified
Reconstitution:	Reconstitution with 150 µl of 0.01 M sterile PBS. "Note: please spin tube briefly prior to opening it to avoid any losses that might occur from lyophilized material adhering to the cap or sides of the tube".
Stability &	Use a manual defrost freezer and avoid repeated freeze-thaw cycles.
Storage:	12 months from date of receipt, -20 to -70°C as supplied. 6 months, -20 to -70°C under sterile conditions after reconstitution. 1 month, 2 to 8°C under sterile conditions after reconstitution.
Shipping:	The product is shipped at 4°C. Upon receipt, store it immediately at the temperature recommended above.

Application Information

Recommended Dilution:	Western Blot (1:1000-1:2000) Note: Optimal dilutions/concentrations should be determined by the end user.
Expected / apparent MW:	117 kDa

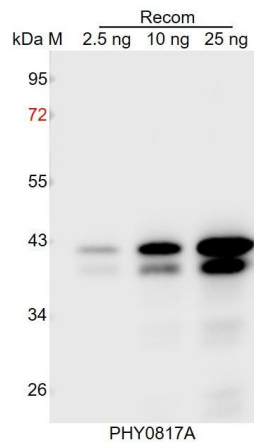
Research Use Only

Predicted Reactivity:

Among species analyzed species, the sequence of the synthetic peptide used for immunization is 80-99% homologues with the sequence in *Populus trichocarpa*, *Spinacia oleracea*, *Brassica napus*, *Brassica rapa*, *Vitis vinifera*, *Solanum lycopersicum*, *Nicotiana tabacum*, *Solanum tuberosum*, *Gossypium raimondii*, *Glycine max*, *Zea mays*.

For more species homologues information, please contact tech support at tech@phytoab.com.

Application Example



Recom: 2.5 ng, 10 ng and 25 ng recombinant protein containing the peptide for immunization and having a molecular mass of 42 kDa.

Electrophoresis: 12% SDS-PAGE

Transfer: blotting to NC (nitrocellulose) membrane for 1 h.

Blocking: 5% skim milk at RT or 4°C for 1 h.

Primary antibody: 1:1000 dilution overnight at 4°C.

Secondary antibody: 1:10000 dilution using Goat Anti-Rabbit IgG H&L (HRP) (Cat# PHY6000).

Detection: using chemiluminescence substrate and image were captured with CCD camera.