

Anti-SEPALLATA 3 antibody

Catalog: PHY2158A

Product Information

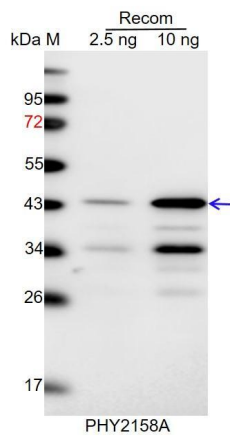
Description:	Rabbit polyclonal antibody
Background:	SEPALLATA (SEP) proteins are MADS-domain transcription factors that regulate a plethora of processes during flower development. A total of four <i>SEP</i> genes, termed <i>SEP1</i> (AT5G15800), <i>SEP2</i> (AT3G02310), <i>SEP3</i> (AT1G24260) and <i>SEP4</i> (AT2G03710), also known as <i>AGL2</i> , <i>AGL4</i> , <i>AGL9</i> and <i>AGL3</i> , respectively were found in <i>Arabidopsis thaliana</i> genome.
Synonyms:	SEP3, AGAMOUS-LIKE 9, AGL9, SEPALLATA3
Immunogen:	KLH-conjugated synthetic peptide (15 aa from C terminal section) derived from <i>Arabidopsis thaliana</i> SEP3 (AT1G24260).
Form:	Lyophilized
Quantity:	150 µg
Purification:	Immunogen affinity purified
Reconstitution:	Reconstitution with 150 µl of 0.01 M sterile PBS. "Note: please spin tube briefly prior to opening it to avoid any losses that might occur from lyophilized material adhering to the cap or sides of the tube".
Stability & Storage:	Use a manual defrost freezer and avoid repeated freeze-thaw cycles. 12 months from date of receipt, -20 to -70°C as supplied. 6 months, -20 to -70°C under sterile conditions after reconstitution. 1 month, 2 to 8°C under sterile conditions after reconstitution.
Shipping:	The product is shipped at 4°C. Upon receipt, store it immediately at the temperature recommended above.

Application Information

Recommended Dilution:	Western Blot (1:1000-1:2000) Note: Optimal dilutions/concentrations should be determined by the end user.
Expected / apparent MW:	29 kDa
Predicted Reactivity:	For more species homologues information, please contact tech support at tech@phytoab.com .

Research Use Only

Application Example



Recom: 2.5 ng and 10 ng recombinant protein containing the peptide for immunization and having a molecular mass of 45 kDa.

Electrophoresis: 12% SDS-PAGE

Transfer: blotting to NC (nitrocellulose) membrane for 1 h.

Blocking: 5% skim milk at RT or 4°C for 1 h.

Primary antibody: 1:1000 dilution overnight at 4°C.

Secondary antibody: 1:10000 dilution using Goat Anti-Rabbit IgG H&L (HRP) (Cat# PHY6000).

Detection: using chemiluminescence substrate and image were captured with CCD camera.