

Anti-Cellulose synthase A catalytic subunit 8 [UDP-forming] antibody

Catalog: PHY0807A

Product Information

Description:	Rabbit polyclonal antibody
Background:	<p>CESA8 is a member of the cellulose synthase family involved in secondary cell wall biosynthesis. It mediates resistance towards bacterial pathogens via ABA and confers resistance towards bacterial and fungal pathogens, but it is independent of salicylic acid, ethylene and jasmonate signaling. The <i>Arabidopsis</i> contains ten CESA proteins: CESA1 (AT5G44030), CESA2 (AT4G39350), CESA3 (AT5G05170), CESA4 (AT5G44030), CESA5 (AT5G09870), CESA6 (AT5G64740), CESA7 (AT5G17420), CESA8 (AT4G18780), CESA9 (AT2G21770) and CESA10 (AT2G25540).</p>
Synonyms:	CESA8, ATCESA8, CELLULOSE SYNTHASE 8, IRREGULAR XYLEM 1, IRX1, LEAF WILTING 2, LEW2
Immunogen:	KLH-conjugated synthetic peptide (21 aa from N terminal section) derived from <i>Arabidopsis thaliana</i> CESA8 (AT4G18780).
Form:	Lyophilized
Quantity:	150 µg
Purification:	Immunogen affinity purified
Reconstitution:	<p>Reconstitution with 150 µl of 0.01 M sterile PBS.</p> <p>"Note: please spin tube briefly prior to opening it to avoid any losses that might occur from lyophilized material adhering to the cap or sides of the tube".</p>
Stability & Storage:	<p>Use a manual defrost freezer and avoid repeated freeze-thaw cycles.</p> <p>12 months from date of receipt, -20 to -70°C as supplied.</p> <p>6 months, -20 to -70°C under sterile conditions after reconstitution.</p> <p>1 month, 2 to 8°C under sterile conditions after reconstitution.</p>
Shipping:	The product is shipped at 4°C. Upon receipt, store it immediately at the temperature recommended above.
Reference:	Hill JL, et al., <i>The Plant Cell</i> 2014, 26; 4834–4842.

Application Information

Applications:	Western Blot (1:1000-1:2000)
----------------------	------------------------------

Research Use Only

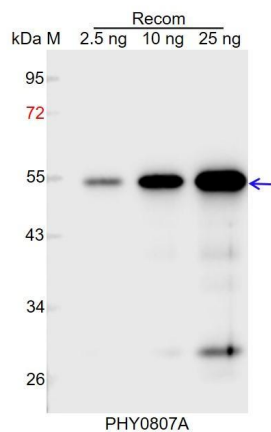
Note: Optimal dilutions/concentrations should be determined by the end user.

Expected Results: 111 kDa

Predicted Reactivity: Among species analyzed, the sequence of the synthetic peptide used for immunization is 80-99% homologues with the sequence in *Brassica napus*, *Brassica rapa*, *Cucumis sativus*, *Glycine max*, *Medicago truncatula*, *Vitis vinifera*, *Zea mays*, *Oryza sativa*, *Setaria viridis*, *Panicum virgatum*, *Sorghum bicolor*, *Hordeum vulgare*, *Triticum aestivum*.

For more species homologues information, please contact tech support at tech@phytoab.com.

Application Example



Recom: 2.5 ng, 10 ng and 25 ng recombinant protein containing the peptide for immunization and having a molecular mass of 55 kDa.

Electrophoresis: 12% SDS-PAGE

Transfer: blotting to NC (nitrocellulose) membrane for 1 h.

Blocking: 5% skim milk at RT or 4°C for 1 h.

Primary antibody: 1:1000 dilution overnight at 4°C.

Secondary antibody: 1:10000 dilution using Goat Anti-Rabbit IgG H&L (HRP) (Cat# PHY6000).

Detection: using chemiluminescence substrate and image were captured with CCD camera.