

Anti-Cellulose synthase A catalytic subunit 7 [UDP-forming] antibody

Catalog: PHY0802A

Product Information

Description:	Rabbit polyclonal antibody
Background:	CESA7 is a xylem-specific cellulose synthase that is phosphorylated on one or more serine residues (on either S185 or one of S180 or S181). It is required for secondary cell wall biosynthesis. The Arabidopsis contains ten CESA proteins: CESA1 (AT5G44030), CESA2 (AT4G39350), CESA3 (AT5G05170), CESA4 (AT5G44030), CESA5 (AT5G09870), CESA6 (AT5G64740), CESA7 (AT5G17420), CESA8 (AT4G18780), CESA9 (AT2G21770) and CESA10 (AT2G25540).
Synonyms:	CESA7, ATCESA7, CELLULOSE SYNTHASE CATALYTIC SUBUNIT 7, IRREGULAR XYLEM 3, IRX3, MUR10, MURUS 10
Immunogen:	KLH-conjugated synthetic peptide (20 aa from N terminal section) derived from <i>Arabidopsis thaliana</i> CESA7 (AT5G17420).
Form:	Lyophilized
Quantity:	150 µg
Purification:	Immunogen affinity purified
Reconstitution:	Reconstitution with 150 µl of 0.01 M sterile PBS. "Note: please spin tube briefly prior to opening it to avoid any losses that might occur from lyophilized material adhering to the cap or sides of the tube".
Stability & Storage:	Use a manual defrost freezer and avoid repeated freeze-thaw cycles. 12 months from date of receipt, -20 to -70°C as supplied. 6 months, -20 to -70°C under sterile conditions after reconstitution. 1 month, 2 to 8°C under sterile conditions after reconstitution.
Shipping:	The product is shipped at 4°C. Upon receipt, store it immediately at the temperature recommended above.

Application Information

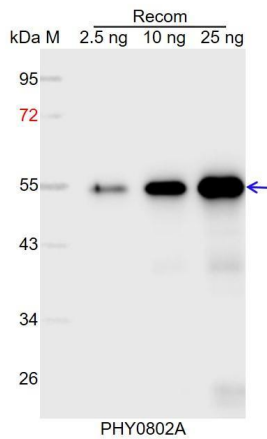
Applications:	Western Blot (1:1000-1:2000) Note: Optimal dilutions/concentrations should be determined by the end user.
----------------------	--

Research Use Only

Expected / apparent MW: 116 kDa

Predicted Reactivity: For more species homologues information, please contact tech support at tech@phytoab.com.

Application Example



Recom: 2.5 ng, 10 ng and 25 ng recombinant protein containing the peptide for immunization and having a molecular mass of 55 kDa.

Electrophoresis: 12% SDS-PAGE

Transfer: blotting to NC (nitrocellulose) membrane for 1 h.

Blocking: 5% skim milk at RT or 4°C for 1 h.

Primary antibody: 1:1000 dilution overnight at 4°C.

Secondary antibody: 1:10000 dilution using Goat Anti-Rabbit IgG H&L (HRP) (Cat# PHY6000).

Detection: using chemiluminescence substrate and image were captured with CCD camera.