

Anti-Serine/threonine-protein kinase AtPK1/AtPK6 antibody

Catalog: PHY2148A

Product Information

Description:	Rabbit polyclonal antibody
Background:	PK1 is a protein-serine kinase that phosphorylates ribosomal protein in vitro. Activation of AtS6k is regulated by 1-naphthylacetic acid and kinetin, at least in part, via a lipid kinase-dependent pathway. PK1 is involved in translational up-regulation of ribosomal proteins and phosphorylated by PDK1.
Synonyms:	PK1, ATPK1, ARABIDOPSIS THALIANA PROTEIN-SERINE KINASE 1, ARABIDOPSIS THALIANA PROTEIN-SERINE KINASE 6, ATPK6, ATS6K1, P70 RIBOSOMAL S6 KINASE, PK6, PROTEIN-SERINE KINASE 1, PROTEIN-SERINE KINASE 6, S6K1
Immunogen:	KLH-conjugated synthetic peptide (15 aa from C terminal section) derived from <i>Arabidopsis thaliana</i> PK1 (AT3G08730).
Form:	Lyophilized
Quantity:	150 µg
Purification:	Immunogen affinity purified
Reconstitution:	Reconstitution with 150 µl of 0.01 M sterile PBS. "Note: please spin tube briefly prior to opening it to avoid any losses that might occur from lyophilized material adhering to the cap or sides of the tube".
Stability & Storage:	Use a manual defrost freezer and avoid repeated freeze-thaw cycles. 12 months from date of receipt, -20 to -70°C as supplied. 6 months, -20 to -70°C under sterile conditions after reconstitution. 1 month, 2 to 8°C under sterile conditions after reconstitution.
Shipping:	The product is shipped at 4°C. Upon receipt, store it immediately at the temperature recommended above.

Application Information

Recommended Dilution:	Western Blot (1:1000-1:2000) Note: Optimal dilutions/concentrations should be determined by the end user.
Expected / apparent MW:	53 kDa

Research Use Only

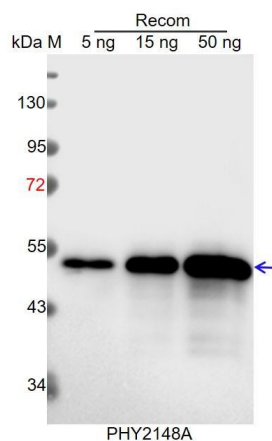
Predicted Reactivity:

Among species analyzed, the sequence of the synthetic peptide used for immunization is 80-99% homologues with the sequence in *Brassica rapa*, *Brassica napus*, *Physcomitrium patens*, *Solanum tuberosum*, *Oryza sativa*, *Hordeum vulgare*, *Triticum aestivum*, *Vitis vinifera*, *Panicum virgatum*, *Setaria viridis*, *Medicago truncatula*, *Nicotiana tabacum*, *Solanum lycopersicum*, *Zea mays*, *Sorghum bicolor*, *Glycine max*.

The sequence of the synthetic peptide used for immunization is 87% (13 / 15) homologues with the sequence in S6K2 (AT3G08720).

For more species homologues information, please contact tech support at tech@phytoab.com.

Application Example



Recom: 5 ng, 15 ng and 50 ng recombinant protein containing the peptide for immunization and having a molecular mass of 53 kDa.

Electrophoresis: 12% SDS-PAGE

Transfer: blotting to NC (nitrocellulose) membrane for 1 h.

Blocking: 5% skim milk at RT or 4°C for 1 h.

Primary antibody: 1:1000 dilution overnight at 4°C.

Secondary antibody: 1:10000 dilution using Goat Anti-Rabbit IgG H&L (HRP) (Cat# PHY6000).

Detection: using chemiluminescence substrate and image were captured with CCD camera.