

Anti-Vacuolar H⁺-ATPase subunit D antibody

Catalog: PHY1330A

Product Information

Description:	Rabbit polyclonal antibody
Background:	The vacuolar-type H ⁽⁺⁾ -ATPase acidifies intracellular compartments and is essential for many processes, including cotransport, guard cell movement, development, and tolerance to environmental stress. There are at least 26 subunits of the vacuolar-type H ⁽⁺⁾ -ATPase in the <i>Arabidopsis thaliana</i> . The pump consists of subunits A through H of the peripheral V(1) complex, and subunits a, c, c" and d of the V(o) membrane sector.
Synonyms:	VHA-D ,V-ATPase, D
Immunogen:	KLH-conjugated synthetic peptide (14 aa from C terminal section) derived from <i>Arabidopsis thaliana</i> VHA-D (AT3G58730).
Form:	Lyophilized
Quantity:	150 µg
Purification:	Immunogen affinity purified
Reconstitution:	Reconstitution with 150 µl of 0.01 M sterile PBS. "Note: please spin tube briefly prior to opening it to avoid any losses that might occur from lyophilized material adhering to the cap or sides of the tube".
Stability & Storage:	Use a manual defrost freezer and avoid repeated freeze-thaw cycles. 12 months from date of receipt, -20 to -70°C as supplied. 6 months, -20 to -70°C under sterile conditions after reconstitution. 1 month, 2 to 8°C under sterile conditions after reconstitution.
Shipping:	The product is shipped at 4°C. Upon receipt, store it immediately at the temperature recommended above.

Application Information

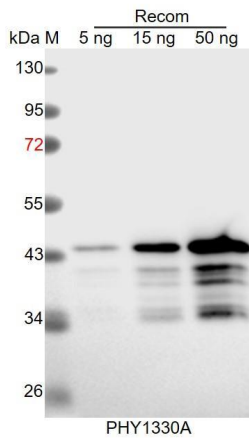
Recommended Dilution:	Western Blot (1:1000-1:2000) Note: Optimal dilutions/concentrations should be determined by the end user.
Expected / apparent MW:	29 kDa
Predicted Reactivity:	Among analyzed species, the sequence of the synthetic peptide used for immunization is 100% homologues with the sequence in <i>Triticum</i>

Research Use Only

aestivum, *Hordeum vulgare*, *Brassica napus*, *Brassica rapa*, and 80-99% homologues with the sequence in *Cucumis sativus*, *Nicotiana tabacum*, *Glycine max*, *Panicum virgatum*, *Zea mays*, *Sorghum bicolor*, *Setaria viridis*, *Oryza sativa Japonica Group*, *Gossypium raimondii*, *Medicago truncatula*, *Solanum lycopersicum*, *Vitis vinifera*, *Solanum tuberosum*.

For more species homologues information, please contact tech support at tech@phytoab.com.

Application Example



Recom: 5 ng, 15 ng and 50 ng recombinant protein containing the peptide for immunization and having a molecular mass of 44 kDa.

Electrophoresis: 12% SDS-PAGE

Transfer: blotting to NC (nitrocellulose) membrane for 1 h.

Blocking: 5% skim milk at RT or 4°C for 1 h.

Primary antibody: 1:1000 dilution overnight at 4°C.

Secondary antibody: 1:10000 dilution using Goat Anti-Rabbit IgG H&L (HRP) (Cat# PHY6000).

Detection: using chemiluminescence substrate and image were captured with CCD camera.