

# Anti-Auxin transporter protein 1 antibody

Catalog: PHY7414S

## Product Information

<b>Description:</b>	Rabbit polyclonal antibody
<b>Background:</b>	AUX1 is an auxin influx transporter. AUX1 resides at the apical plasma membrane of protophloem cells and at highly dynamic subpopulations of Golgi apparatus and endosomes in all cell types. AUX1 action in the lateral root cap and/or epidermal cells influences lateral root initiation and positioning. Shoot supplied ammonium targets AUX1 and inhibits lateral root emergence.
<b>Synonyms:</b>	AUX1, ATAUX1, AUXIN RESISTANT 1, MAP1, MODIFIER OF ARF7/NPH4 PHENOTYPES 1, PIR1, WAV5, WAVY ROOTS 5.
<b>Immunogen:</b>	KLH-conjugated synthetic peptide (15 aa from N terminal section) derived from <i>Arabidopsis thaliana</i> AUX1 (AT2G38120).
<b>Form:</b>	Lyophilized
<b>Quantity:</b>	150 µg
<b>Purification:</b>	Serum Peptide affinity form antibody available upon request at <a href="mailto:info@phytoab.com">info@phytoab.com</a> .
<b>Reconstitution:</b>	Reconstitution with 150 µl of sterile water. "Note: please spin tube briefly prior to opening it to avoid any losses that might occur from lyophilized material adhering to the cap or sides of the tube".
<b>Stability &amp;</b>	Use a manual defrost freezer and avoid repeated freeze-thaw cycles.
<b>Storage:</b>	12 months from date of receipt, -20 to -70°C as supplied. 6 months, -20 to -70°C under sterile conditions after reconstitution. 1 month, 2 to 8°C under sterile conditions after reconstitution.
<b>Shipping:</b>	The product is shipped at 4°C. Upon receipt, store it immediately at the temperature recommended above.

## Application Information

<b>Recommended Dilution:</b>	Western Blot (1:1000-1:2000) Note: Optimal dilutions/concentrations should be determined by the end user.
<b>Expected / apparent MW:</b>	54 kDa

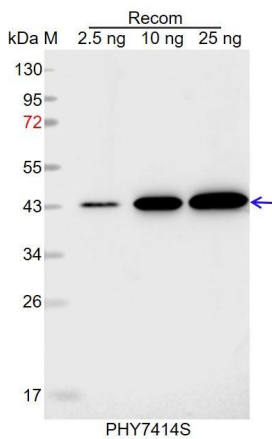
Research Use Only

### Predicted Reactivity:

Among species analyzed, the sequence of the synthetic peptide used for immunization is 100% homologues with the sequence in *Brassica rapa*, *Brassica napus*, and 80-99% homologues with the sequence in *Oryza sativa*, *Sorghum bicolor*, *Panicum virgatum*, *Setaria viridis*, *Solanum lycopersicum*, *Solanum tuberosum*, *Triticum aestivum*, *Hordeum vulgare*, *Zea mays*, *Nicotiana tabacum*, *Spinacia oleracea*, *Glycine max*, *Vitis vinifera*, *Gossypium raimondii*, *Medicago truncatula*.

For more species homologues information, please contact tech support at [tech@phytoab.com](mailto:tech@phytoab.com).

### Application Example



Recom: 2.5 ng, 10 ng and 25 ng recombinant protein containing the peptide for immunization and having a molecular mass of 43 kDa.

**Electrophoresis:** 12% SDS-PAGE

**Transfer:** blotting to NC (nitrocellulose) membrane for 1 h.

**Blocking:** 5% skim milk at RT or 4°C for 1 h.

**Primary antibody:** 1:1000 dilution overnight at 4°C.

**Secondary antibody:** 1:10000 dilution using Goat Anti-Rabbit IgG H&L (HRP) (Cat# PHY6000).

**Detection:** using chemiluminescence substrate and image were captured with CCD camera.