

Anti-RbcL subunit of RuBisCO antibody

Catalog: PHY0104S

Product Information

Description:	Rabbit polyclonal antibody
Background:	<p>Ribulose-1,5-bisphosphate carboxylase/oxygenase commonly known by the abbreviation RuBisCO, is an enzyme involved in the first major step of carbon fixation, a process by which atmospheric carbon dioxide is converted by plants to energy-rich molecules such as glucose. In chemical terms, it catalyzes the carboxylation of ribulose-1,5-bisphosphate (also known as RuBP). It is probably the most abundant enzyme on Earth.</p> <p>The enzyme usually consists of two types of protein subunit, called the large chain (RbcL) and the small chain (RbcS).</p>
Synonyms:	RbcL, Ribulose-1,5-bisphosphate carboxylase, oxygenase
Immunogen:	KLH-conjugated synthetic peptide (16 aa from N terminal section) derived from <i>Arabidopsis thaliana</i> RbcL (ATCG00490).
Form:	Lyophilized
Quantity:	150 µg
Purification:	Serum
Reconstitution:	<p>Peptide affinity form antibody available upon request at info@phytoab.com.</p> <p>Reconstitution with 150 µl of sterile water.</p> <p>"Note: please spin tube briefly prior to opening it to avoid any losses that might occur from lyophilized material adhering to the cap or sides of the tube".</p>
Stability & Storage:	<p>Use a manual defrost freezer and avoid repeated freeze-thaw cycles.</p> <p>12 months from date of receipt, -20 to -70°C as supplied.</p> <p>6 months, -20 to -70°C under sterile conditions after reconstitution.</p> <p>1 month, 2 to 8°C under sterile conditions after reconstitution.</p>
Shipping:	The product is shipped at 4°C. Upon receipt, store it immediately at the temperature recommended above.

Application Information

Recommended Dilution:	Western Blot (1:1000-1:5000)
	Note: Optimal dilutions/concentrations should be determined by the end user.

Research Use Only

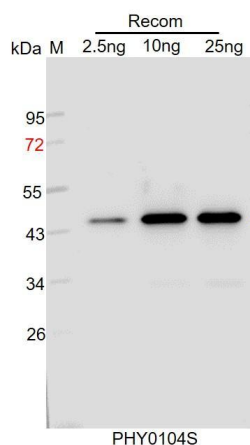
Expected / apparent MW:

53 kDa

Predicted Reactivity:

Among species analyzed, the sequence of the synthetic peptide used for immunization is 100% homologues with the sequence in *Solanum tuberosum*, *Zea mays*, *Sorghum bicolor*, *Gossypium raimondii*, *Brassica rapa*, *Leymus chinensis*, *Setaria viridis*, *Oryza sativa*, *Medicago truncatula*, *Populus trichocarpa*, *Glycine max*, *Cucumis sativus*, *Hordeum vulgare*, *Nicotiana tabacum*, *Solanum lycopersicum*, *Panicum virgatum*, *Triticum aestivum*, *Spinacia oleracea*, *Physcomitrium patens*, *Vitis vinifera*, *Brassica napus*. For more species homologues information, please contact tech support at tech@phytoab.com.

Application Example



Recom: 2.5 ng, 10 ng and 25 ng recombinant protein containing the peptide for immunization and having a molecular mass of 45 kDa.

Electrophoresis: 12% SDS-PAGE

Transfer: blotting to NC (nitrocellulose) membrane for 1 h.

Blocking: 5% skim milk at RT or 4°C for 1 h.

Primary antibody: 1:1000 dilution overnight at 4°C.

Secondary antibody: 1:10000 dilution using Goat Anti-Rabbit IgG H&L (HRP) (Cat# PHY6000).

Detection: using chemiluminescence substrate and image were captured with CCD camera.