

# Anti-AT1G53100 antibody

Catalog: PHY7354S

## Product Information

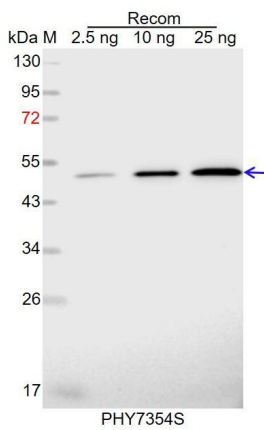
|                        |  |
|------------------------|--|
| <b>Description:</b>    | Rabbit polyclonal antibody   |
| <b>Background:</b>     | AT1G53100  |
| <b>Synonyms:</b>       | AT1G53100  |
| <b>Immunogen:</b>      | KLH-conjugated synthetic peptide (17 aa from C terminal section) derived from <i>Arabidopsis thaliana</i> AT1G53100.   |
| <b>Form:</b>           | Lyophilized  |
| <b>Quantity:</b>       | 150 µg   |
| <b>Purification:</b>   | Serum<br>Peptide affinity form antibody available upon request at <a href="mailto:info@phytoab.com">info@phytoab.com</a> .   |
| <b>Reconstitution:</b> | Reconstitution with 150µl of sterile water.<br>"Note: please spin tube briefly prior to opening it to avoid any losses that might occur from lyophilized material adhering to the cap or sides of the tube". |
| <b>Stability &amp;</b> | Use a manual defrost freezer and avoid repeated freeze-thaw cycles.  |
| <b>Storage:</b>        | 12 months from date of receipt, -20 to -70°C as supplied.<br>6 months, -20 to -70°C under sterile conditions after reconstitution.<br>1 month, 2 to 8°C under sterile conditions after reconstitution.       |
| <b>Shipping:</b>       | The product is shipped at 4°C. Upon receipt, store it immediately at the temperature recommended above.  |

## Application Information

|                                |  |
|--------------------------------|--|
| <b>Recommended Dilution:</b>   | Western Blot (1:1000-1:2000)<br>Note: Optimal dilutions/concentrations should be determined by the end user.   |
| <b>Expected / apparent MW:</b> | 48 kDa   |
| <b>Predicted Reactivity:</b>   | Among species analyzed, the sequence of the synthetic peptide used for immunization is 80-99% homologues with the sequence in <i>Brassica rapa</i> , <i>Brassica napus</i> .<br>For more species homologues information, please contact tech support at <a href="mailto:tech@phytoab.com">tech@phytoab.com</a> . |

Research Use Only

## Application Example



Recom: 2.5 ng, 10 ng and 25 ng recombinant protein containing the peptide for immunization and having a molecular mass of 52 kDa.

**Electrophoresis:** 12% SDS-PAGE

**Transfer:** blotting to NC (nitrocellulose) membrane for 1 h.

**Blocking:** 5% skim milk at RT or 4°C for 1 h.

**Primary antibody:** 1:1000 dilution overnight at 4°C.

**Secondary antibody:** 1:10000 dilution using Goat Anti-Rabbit IgG H&L (HRP) (Cat# PHY6000).

**Detection:** using chemiluminescence substrate and image were captured with CCD camera.