

Anti-Succinate dehydrogenase [ubiquinone] flavoprotein subunit 1, mitochondrial, C-terminal antibody

Catalog: PHY1409A

Product Information

Description:	Rabbit polyclonal antibody
Background:	Mitochondrial succinate dehydrogenase complex is also called respiratory Complex II and it is an enzyme complex found in the inner mitochondrial membrane of eukaryotes. Succinate dehydrogenase complex catalyzes the oxidation of succinate to fumarate with the reduction of ubiquinone to ubiquinol. In <i>Arabidopsis</i> mitochondria, succinate dehydrogenase complex contains 8 subunits from SDH1-SDH8. SDH1 is encoded by AT5G66760.
Synonyms:	SDH1-1, SUCCINATE DEHYDROGENASE 1-1
Immunogen:	KLH-conjugated synthetic peptide (15 aa from C terminal section) derived from <i>Arabidopsis thaliana</i> SDH1-1 (AT5G66760).
Form:	Lyophilized
Quantity:	150 µg
Purification:	Immunogen affinity purified
Reconstitution:	Reconstitution with 150 µl of 0.01 M sterile PBS. "Note: please spin tube briefly prior to opening it to avoid any losses that might occur from lyophilized material adhering to the cap or sides of the tube".
Stability & Storage:	Use a manual defrost freezer and avoid repeated freeze-thaw cycles. 12 months from date of receipt, -20 to -70°C as supplied. 6 months, -20 to -70°C under sterile conditions after reconstitution. 1 month, 2 to 8°C under sterile conditions after reconstitution.
Shipping:	The product is shipped at 4°C. Upon receipt, store it immediately at the temperature recommended above.

Application Information

Recommended Dilution:	Western Blot (1:1000-1:2000) Note: Optimal dilutions/concentrations should be determined by the end user.
------------------------------	--

Research Use Only

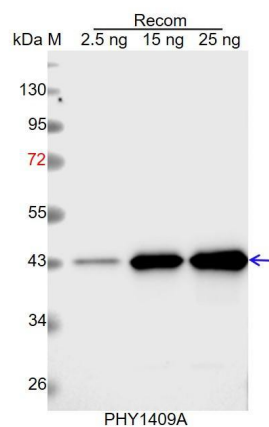
Expected / apparent MW: 70 kDa

Predicted Reactivity: Among species analyzed, the sequence of the synthetic peptide used for immunization is 100% homologues with the sequence in *Brassica napus*, *Brassica rapa*, and 80-99% homologues with the sequence in *Cucumis sativus*, *Physcomitrium patens*, *Nicotiana tabacum*, *Hordeum vulgare*, *Triticum aestivum*, *Gossypium raimondii*, *Populus trichocarpa*, *Panicum virgatum*, *Glycine max*, *Spinacia oleracea*, *Solanum tuberosum*, *Solanum lycopersicum*, *Medicago truncatula*, *Zea mays*, *Sorghum bicolor*, *Setaria viridis*.

The sequence of the synthetic peptide used for immunization is 87% homologues with the sequence in SDH1-2 (AT2G18450).

For more species homologues information, please contact tech support at tech@phytoab.com.

Application Example



Recom: 2.5 ng, 15 ng and 25 ng recombinant protein containing the peptide for immunization and having a molecular mass of 44 kDa.

Electrophoresis: 12% SDS-PAGE

Transfer: blotting to NC (nitrocellulose) membrane for 1 h.

Blocking: 5% skim milk at RT or 4°C for 1 h.

Primary antibody: 1:1000 dilution overnight at 4°C.

Secondary antibody: 1:10000 dilution using Goat Anti-Rabbit IgG H&L (HRP) (Cat# PHY6000).

Detection: using chemiluminescence substrate and image were captured with CCD camera.