

Anti-NADH dehydrogenase [ubiquinone] iron-sulfur protein 5-A/B antibody

Catalog: PHY0531A

Product Information

Description:	Rabbit polyclonal antibody
Background:	Complex I is the largest protein complex of the oxidative phosphorylation system in mitochondrial and it catalyzes NADH-quinone oxidoreduction. Complex I represents the main entrance site for electrons into the respiratory electron transfer chain. In Arabidopsis, Complex I have at least 49 subunits and AT3G62790 may be one of the subunit.
Synonyms:	AT3G62790, AT2G47690
Immunogen:	KLH-conjugated synthetic peptide (15 aa from C terminal section) derived from <i>Arabidopsis thaliana</i> AT2G47690, AT3G62790.
Form:	Lyophilized
Quantity:	150 µg
Purification:	Immunogen affinity purified
Reconstitution:	Reconstitution with 150 µl of 0.01 M sterile PBS. "Note: please spin tube briefly prior to opening it to avoid any losses that might occur from lyophilized material adhering to the cap or sides of the tube".
Stability & Storage:	Use a manual defrost freezer and avoid repeated freeze-thaw cycles. 12 months from date of receipt, -20 to -70°C as supplied. 6 months, -20 to -70°C under sterile conditions after reconstitution. 1 month, 2 to 8°C under sterile conditions after reconstitution.
Shipping:	The product is shipped at 4°C. Upon receipt, store it immediately at the temperature recommended above.

Application Information

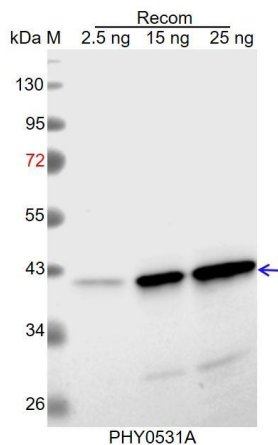
Recommended Dilution:	Western Blot (1:1000-1:2000) Note: Optimal dilutions/concentrations should be determined by the end user.
Expected / apparent MW:	10 kDa (AT3G62790), 14 kDa (AT2G47690)
Predicted Reactivity:	Among species analyzed, the sequence of the synthetic peptide used for immunization is 100% homologues with the sequence in

Research Use Only

Medicago truncatula, *Brassica napus*, *Brassica rapa*, *Glycine max*, *Populus trichocarpa*, *Gossypium raimondii*, *Oryza sativa*, and 80-99% homologues with the sequence in *Cucumis sativus*, *Solanum tuberosum*, *Solanum lycopersicum*, *Nicotiana tabacum*, *Zea mays*, *Vitis vinifera*, *Sorghum bicolor*, *Setaria viridis*, *Triticum aestivum*, *Setaria viridis*, *Spinacia oleracea*.

For more species homologues information, please contact tech support at tech@phytoab.com.

Application Example



Recom: 2.5 ng, 15 ng and 25 ng recombinant protein containing the peptide for immunization and having a molecular mass of 41 kDa.

Electrophoresis: 12% SDS-PAGE

Transfer: blotting to NC (nitrocellulose) membrane for 1 h.

Blocking: 5% skim milk at RT or 4°C for 1 h.

Primary antibody: 1:1000 dilution overnight at 4°C.

Secondary antibody: 1:10000 dilution using Goat Anti-Rabbit IgG H&L (HRP) (Cat# PHY6000).

Detection: using chemiluminescence substrate and image were captured with CCD camera.