

Anti-LRR receptor-like serine/threonine-protein kinase ERL1, C-terminal antibody

Catalog: PHY1991A

Product Information

| | |
|---------------------------------|--|
| Description: | Rabbit polyclonal antibody |
| Background: | ERL1 is a receptor kinase that regulates inflorescence architecture and organ shape as well as stomatal patterning, including density and clustering, together with ER and ERL2 (AT5G07180). And it forms a constitutive complex with TMM (AT1G80080) involved in the recognition of the stomatal regulatory peptides EPF1 (AT2G20875), EPF2 (AT1G34245) and EPFL9/STOMAGEN (AT4G12970). |
| Synonyms: | ERL1, ERECTA-LIKE 1 |
| Immunogen: | KLH-conjugated synthetic peptide (19 aa from C terminal section) derived from <i>Arabidopsis thaliana</i> ERL1 (AT5G62230). |
| Form: | Lyophilized |
| Quantity: | 150 µg |
| Purification: | Immunogen affinity purified |
| Reconstitution: | Reconstitution with 150 µl of 0.01 M sterile PBS. "Note: please spin tube briefly prior to opening it to avoid any losses that might occur from lyophilized material adhering to the cap or sides of the tube". |
| Stability & Storage: | Use a manual defrost freezer and avoid repeated freeze-thaw cycles. 12 months from date of receipt, -20 to -70°C as supplied. 6 months, -20 to -70°C under sterile conditions after reconstitution. 1 month, 2 to 8°C under sterile conditions after reconstitution. |
| Shipping: | The product is shipped at 4°C. Upon receipt, store it immediately at the temperature recommended above. |

Application Information

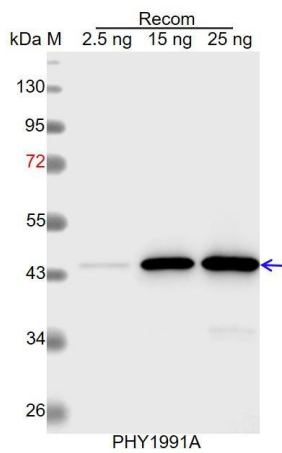
| | |
|------------------------------|--|
| Recommended Dilution: | Western Blot (1:1000-1:2000) Note: Optimal dilutions/concentrations should be determined by the end user. |
|------------------------------|--|

Research Use Only

Expected / apparent MW: 106 kDa

Predicted Reactivity: For more species homologues information, please contact tech support at tech@phytoab.com.

Application Example



Recom: 2.5 ng, 15 ng and 25 ng recombinant protein containing the peptide for immunization and having a molecular mass of 48 kDa.

Electrophoresis: 12% SDS-PAGE

Transfer: blotting to NC (nitrocellulose) membrane for 1 h.

Blocking: 5% skim milk at RT or 4°C for 1 h.

Primary antibody: 1:1000 dilution overnight at 4°C.

Secondary antibody: 1:10000 dilution using Goat Anti-Rabbit IgG H&L (HRP) (Cat# PHY6000).

Detection: using chemiluminescence substrate and image were captured with CCD camera.