

Anti-ATP-dependent zinc metalloprotease FTSH 4, mitochondrial antibody

Catalog: PHY0138A

Product Information

Description:	Rabbit polyclonal antibody
Background:	FTSH4 is an FtsH protease that is localized to the mitochondrion. Loss of function results in increased determinacy of the meristem that is exacerbated when plants are grown at higher temperatures.
Synonyms:	FTSH4, ATFTSH4, FTSH PROTEASE 4
Immunogen:	KLH-conjugated synthetic peptide (17 aa from Central section) derived from <i>Arabidopsis thaliana</i> FTSH4 (AT2G26140).
Form:	Lyophilized
Quantity:	150 µg
Purification:	Immunogen affinity purified
Reconstitution:	Reconstitution with 150 µl of 0.01 M sterile PBS. "Note: please spin tube briefly prior to opening it to avoid any losses that might occur from lyophilized material adhering to the cap or sides of the tube".
Stability & Storage:	Use a manual defrost freezer and avoid repeated freeze-thaw cycles. 12 months from date of receipt, -20 to -70°C as supplied. 6 months, -20 to -70°C under sterile conditions after reconstitution. 1 month, 2 to 8°C under sterile conditions after reconstitution.
Shipping:	The product is shipped at 4°C. Upon receipt, store it immediately at the temperature recommended above.

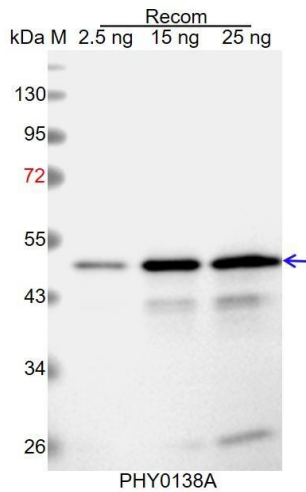
Application Information

Recommended Dilution:	Western Blot (1:1000-1:2000) Note: Optimal dilutions/concentrations should be determined by the end user.
Expected / apparent MW:	77 kDa
Predicted Reactivity:	Among species analyzed, the sequence of the synthetic peptide used for immunization is 100% homologues with the sequence in <i>Brassica napus</i> , <i>Glycine max</i> , <i>Brassica rapa</i> , <i>Vitis vinifera</i> , <i>Cucumis sativus</i> , <i>Sorghum bicolor</i> , <i>Panicum virgatum</i> , <i>Setaria viridis</i> , <i>Spinacia oleracea</i> ,

Research Use Only

Nicotiana tabacum, Solanum lycopersicum, Solanum tuberosum, Cucumis sativus, Oryza sativa, Populus trichocarpa, Medicago truncatula, Gossypium raimondii, Triticum aestivum, Zea mays.
 For more species homologues information, please contact tech support at tech@phytoab.com.

Application Example



Recom: 2.5 ng, 15 ng and 25 ng recombinant protein containing the peptide for immunization and having a molecular mass of 47 kDa.

Electrophoresis: 12% SDS-PAGE

Transfer: blotting to NC (nitrocellulose) membrane for 1 h.

Blocking: 5% skim milk at RT or 4°C for 1 h.

Primary antibody: 1:1000 dilution overnight at 4°C.

Secondary antibody: 1:10000 dilution using Goat Anti-Rabbit IgG H&L (HRP) (Cat# PHY6000).

Detection: using chemiluminescence substrate and image were captured with CCD camera.