

Anti-Putative spliceosome-associated protein antibody

Catalog: PHY2891A

Product Information

Description:	Rabbit polyclonal antibody
Background:	EMB2444 regulates embryonic pattern formation through Pol II-Mediated transcription of WOX2 an PIN7.
Synonyms:	EMB2444, EMBRYO DEFECTIVE 2444, JANUS
Immunogen:	KLH-conjugated synthetic peptide (18 aa from N terminal section) derived from <i>Arabidopsis thaliana</i> EMB2444 (AT2G18510).
Form:	Lyophilized
Quantity:	150 µg
Purification:	Immunogen affinity purified
Reconstitution:	Reconstitution with 150 µl of 0.01 M sterile PBS. "Note: please spin tube briefly prior to opening it to avoid any losses that might occur from lyophilized material adhering to the cap or sides of the tube".
Stability & Storage:	Use a manual defrost freezer and avoid repeated freeze-thaw cycles. 12 months from date of receipt, -20 to -70°C as supplied. 6 months, -20 to -70°C under sterile conditions after reconstitution. 1 month, 2 to 8°C under sterile conditions after reconstitution.
Shipping:	The product is shipped at 4°C. Upon receipt, store it immediately at the temperature recommended above.

Application Information

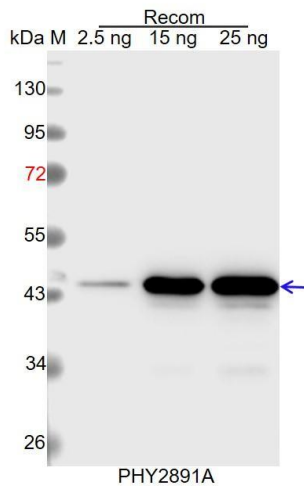
Recommended Dilution:	Western Blot (1:1000-1:2000) Note: Optimal dilutions/concentrations should be determined by the end user.
Expected / apparent MW:	40 kDa
Predicted Reactivity:	Among species analyzed, the sequence of the synthetic peptide used for immunization is 100% homologues with the sequence in <i>Zea mays</i> , <i>Glycine max</i> , <i>Chlamydomonas reinhardtii</i> , <i>Oryza sativa</i> , <i>Cucumis sativus</i> , <i>Medicago truncatula</i> , <i>Panicum virgatum</i> , <i>Setaria viridis</i> , <i>Sorghum bicolor</i> , and 80-99% homologues with the sequence in <i>Physcomitrium patens</i> , <i>Solanum tuberosum</i> , <i>Vitis vinifera</i> , <i>Spinacia</i>

Research Use Only

oleracea, Triticum aestivum, Hordeum vulgare, Gossypium raimondii, Solanum lycopersicum, Nicotiana tabacum, Spinacia oleracea, Brassica napus, Brassica rapa, Populus trichocarpa.

For more species homologues information, please contact tech support at tech@phytoab.com.

Application Example



Recom: 2.5 ng, 15 ng and 25 ng recombinant protein containing the peptide for immunization and having a molecular mass of 45 kDa.

Electrophoresis: 12% SDS-PAGE

Transfer: blotting to NC (nitrocellulose) membrane for 1 h.

Blocking: 5% skim milk at RT or 4°C for 1 h.

Primary antibody: 1:1000 dilution overnight at 4°C.

Secondary antibody: 1:10000 dilution using Goat Anti-Rabbit IgG H&L (HRP) (Cat# PHY6000).

Detection: using chemiluminescence substrate and image were captured with CCD camera.