

Anti-PLASTID TRANSCRIPTIONALLY ACTIVE 1 antibody

Catalog: PHY3632A

Product Information

Description:	Rabbit polyclonal antibody
Background:	The plant-specific single-strand DNA-binding protein WHIRLY1 (WHY1), a repressor of leaf natural senescence, is dually located in both nucleus and plastids. The WHY1 protein bound to the promoter of WRKY53 in a development-dependent manner during early senescence in <i>Arabidopsis</i> .
Synonyms:	pTAC1, A. THALIANA WHIRLY 1, ATWHY1, PTAC1, WHIRLY 1, WHY1
Immunogen:	KLH-conjugated synthetic peptide (14 aa from Central section) derived from <i>Arabidopsis thaliana</i> pTAC1 (AT1G14410).
Form:	Lyophilized
Quantity:	150 µg
Purification:	Immunogen affinity purified
Reconstitution:	Reconstitution with 150 µl of 0.01 M sterile PBS. "Note: please spin tube briefly prior to opening it to avoid any losses that might occur from lyophilized material adhering to the cap or sides of the tube".
Stability & Storage:	Use a manual defrost freezer and avoid repeated freeze-thaw cycles. 12 months from date of receipt, -20 to -70°C as supplied. 6 months, -20 to -70°C under sterile conditions after reconstitution. 1 month, 2 to 8°C under sterile conditions after reconstitution.
Shipping:	The product is shipped at 4°C. Upon receipt, store it immediately at the temperature recommended above.

Application Information

Recommended Dilution:	Western Blot (1:1000-1:5000) Note: Optimal dilutions/concentrations should be determined by the end user.
Expected / apparent MW:	29 kDa
Predicted Reactivity:	Among species analyzed, the sequence of the synthetic peptide used for immunization is 100% homologous with the sequence in

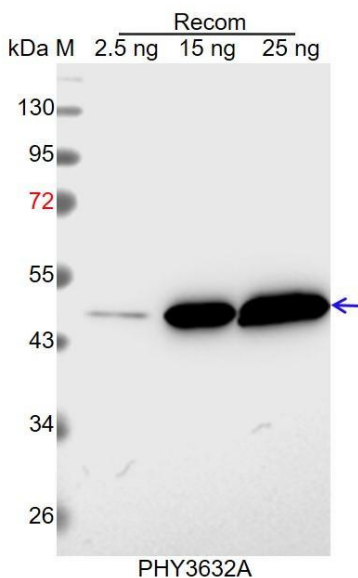
Research Use Only

Gossypium raimondii, *Glycine max*, and 80-99% homologues with the sequence in *Hordeum vulgare*, *Cucumis sativus*, *Oryza sativa*, *Triticum aestivum*, *Panicum virgatum*, *Setaria viridis*, *Vitis vinifera*, *Sorghum bicolor*, *Zea mays*, *Medicago truncatula*, *Spinacia oleracea*, *Populus trichocarpa*, *Brassica napus*, *Brassica rapa*, *Nicotiana tabacum*.

The sequence of the synthetic peptide used for immunization is 93% homologues with the sequence in pTAC11 (AT2G02740).

For more species homologues information, please contact tech support at tech@phytoab.com.

Application Example



Recom: 2.5 ng, 15 ng and 25 ng recombinant protein containing the peptide for immunization and having a molecular mass of 47 kDa.

Electrophoresis: 12% SDS-PAGE

Transfer: blotting to NC (nitrocellulose) membrane for 1 h.

Blocking: 5% skim milk at RT or 4°C for 1 h.

Primary antibody: 1:1000 dilution overnight at 4°C.

Secondary antibody: 1:10000 dilution using Goat Anti-Rabbit IgG H&L (HRP) (Cat# PHY6000).

Detection: using chemiluminescence substrate and image were captured with CCD camera.