

Anti-Aquaporin TIP3-1/2, N-terminal antibody

Catalog: PHY3317A

Product Information

Description:	Rabbit polyclonal antibody
Background:	Tonoplast intrinsic proteins (TIPs), which belong to the major intrinsic protein family, are members of plant aquaporins (AQPs) and are localized in the membrane of the vacuole. The TIP family consists of five subgroups, namely TIP1 (γ -TIP), TIP2 (δ -TIP), TIP3 (α -TIP and β -TIP), TIP4 (ϵ -TIP), and TIP5 (ξ -TIP). TIP3;1 and TIP3;2 are specifically expressed during seed maturation and localized to the seed protein storage vacuole membrane.
Synonyms:	TIP3-1/2
Immunogen:	KLH-conjugated synthetic peptide (14 aa from N terminal section) derived from <i>Arabidopsis thaliana</i> TIP3-1 (AT1G73190) and TIP3-2 (AT1G17810).
Form:	Lyophilized
Quantity:	150 μ g
Purification:	Immunogen affinity purified
Reconstitution:	Reconstitution with 150 μ l of 0.01 M sterile PBS. "Note: please spin tube briefly prior to opening it to avoid any losses that might occur from lyophilized material adhering to the cap or sides of the tube".
Stability & Storage:	Use a manual defrost freezer and avoid repeated freeze-thaw cycles. 12 months from date of receipt, -20 to -70°C as supplied. 6 months, -20 to -70°C under sterile conditions after reconstitution. 1 month, 2 to 8°C under sterile conditions after reconstitution.
Shipping:	The product is shipped at 4°C. Upon receipt, store it immediately at the temperature recommended above.

Application Information

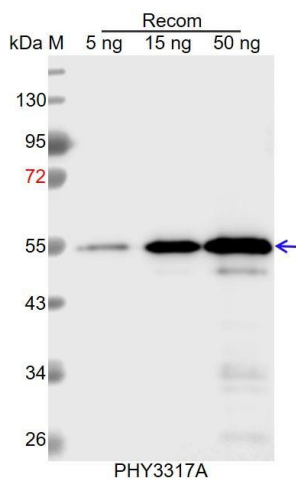
Recommended Dilution:	Western Blot (1:1000-1:2000) Note: Optimal dilutions/concentrations should be determined by the end user.
Expected / apparent MW:	28 kDa
Predicted Reactivity:	Among species analyzed, the sequence of the synthetic peptide used for immunization is 100% homologues with the sequence in <i>Cucumis</i>

Research Use Only

sativus, *Brassica rapa*, *Brassica napus*, and 80-99% homologues with the sequence in *Solanum lycopersicum*, *Nicotiana tabacum*, *Solanum tuberosum*, *Populus trichocarpa*, *Gossypium raimondii*, *Glycine max*, *Vitis vinifera*, *Medicago truncatula*.

For more species homologues information, please contact tech support at tech@phytoab.com.

Application Example



Recom: 5 ng, 15 ng and 50 ng recombinant protein containing the peptide for immunization and having a molecular mass of 55 kDa.

Electrophoresis: 12% SDS-PAGE

Transfer: blotting to NC (nitrocellulose) membrane for 1 h.

Blocking: 5% skim milk at RT or 4°C for 1 h.

Primary antibody: 1:1000 dilution overnight at 4°C.

Secondary antibody: 1:10000 dilution using Goat Anti-Rabbit IgG H&L (HRP) (Cat# PHY6000).

Detection: using chemiluminescence substrate and image were captured with CCD camera.