

Anti-Cytochrome c biogenesis protein CCS1, chloroplastic, C-terminal antibody

Catalog: PHY2905A

Product Information

Description:	Rabbit polyclonal antibody
Background:	AT1G49380 is a member of cytochrome c biogenesis protein family, it is required during biogenesis of c-type cytochromes (cytochrome c6 and cytochrome f) at the step of heme attachment.
Synonyms:	AT1G49380, C-type cytochrome synthesis protein 1
Immunogen:	KLH-conjugated synthetic peptide (18 aa from C terminal section) derived from <i>Arabidopsis thaliana</i> AT1G49380.
Form:	Lyophilized
Quantity:	150 µg
Purification:	Immunogen affinity purified
Reconstitution:	Reconstitution with 150 µl of 0.01 M sterile PBS. "Note: please spin tube briefly prior to opening it to avoid any losses that might occur from lyophilized material adhering to the cap or sides of the tube".
Stability & Storage:	Use a manual defrost freezer and avoid repeated freeze-thaw cycles. 12 months from date of receipt, -20 to -70°C as supplied. 6 months, -20 to -70°C under sterile conditions after reconstitution. 1 month, 2 to 8°C under sterile conditions after reconstitution.
Shipping:	The product is shipped at 4°C. Upon receipt, store it immediately at the temperature recommended above.

Application Information

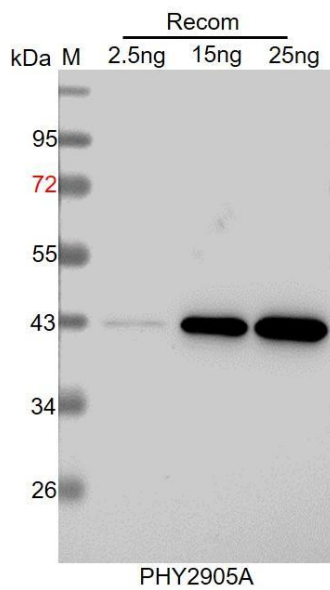
Recommended Dilution:	Western Blot (1:1000-1:2000) Note: Optimal dilutions/concentrations should be determined by the end user.
Expected / apparent MW:	59 kDa
Predicted Reactivity:	Among species analyzed, the sequence of the synthetic peptide used for immunization is 100% homologues with the sequence in <i>Brassica napus</i> , <i>Brassica rapa</i> , and 80-99% homologues with the sequence in <i>Oryza sativa</i> , <i>Populus trichocarpa</i> , <i>Panicum virgatum</i> ,

Research Use Only

Setaria viridis, *Sorghum bicolor*, *Vitis vinifera*, *Hordeum vulgare*,
Triticum aestivum, *Zea mays*, *Spinacia oleracea*, *Glycine max*,
Solanum lycopersicum, *Solanum tuberosum*, *Nicotiana tabacum*,
Gossypium raimondii.

For more species homologues information, please contact tech support at tech@phytoab.com.

Application Example



Recom: 2.5 ng, 15 ng and 25 ng recombinant protein containing the peptide for immunization and having a molecular mass of 43 kDa.

Electrophoresis: 12% SDS-PAGE

Transfer: blotting to NC (nitrocellulose) membrane for 1 h.

Blocking: 5% skim milk at RT or 4 °C for 1 h.

Primary antibody: 1:1000 dilution overnight at 4 °C.

Secondary antibody: 1:10000 dilution using Goat Anti-Rabbit IgG H&L (HRP) (Cat# PHY6000).

Detection: using chemiluminescence substrate and image were captured with CCD camera.