

Anti-Protein CUP-SHAPED COTYLEDON 2, C-terminal antibody

Catalog: PHY1668A

Product Information

Description:	Rabbit polyclonal antibody
Background:	Transcriptional activator of the NAC gene family, with CUC1 redundantly required for embryonic apical meristem formation, cotyledon separation and expression of STM. Proper timing of CUC2 expression is required to maintain the phyllotactic pattern initiated in the meristem. CUC2 expression in leaf sinus region is required for serration and the extent of serration is modulated by mir164A mediated repression of CUC2. Together with CUC3-DA1-UBP15 part of a regulatory module which controls the initiation of axillary meristems, thereby determining plant architecture. Regulates the axillary meristem initiation, directly binding to the DA1 promoter.
Synonyms:	CUC2, NAC098, ARABIDOPSIS NAC DOMAIN CONTAINING PROTEIN 98, ATCUC2, CUP-SHAPED COTYLEDON 2
Immunogen:	KLH-conjugated synthetic peptide (15 aa from C terminal section) derived from <i>Arabidopsis thaliana</i> CUC2 (AT5G53950).
Form:	Lyophilized
Quantity:	150 µg
Purification:	Immunogen affinity purified
Reconstitution:	Reconstitution with 150 µl of 0.01 M sterile PBS. "Note: please spin tube briefly prior to opening it to avoid any losses that might occur from lyophilized material adhering to the cap or sides of the tube".
Stability & Storage:	Use a manual defrost freezer and avoid repeated freeze-thaw cycles. 12 months from date of receipt, -20 to -70°C as supplied. 6 months, -20 to -70°C under sterile conditions after reconstitution. 1 month, 2 to 8°C under sterile conditions after reconstitution.
Shipping:	The product is shipped at 4°C. Upon receipt, store it immediately at the temperature recommended above.

Application Information

Recommended Dilution:	Western Blot (1:1000-1:2000)
------------------------------	------------------------------

Research Use Only

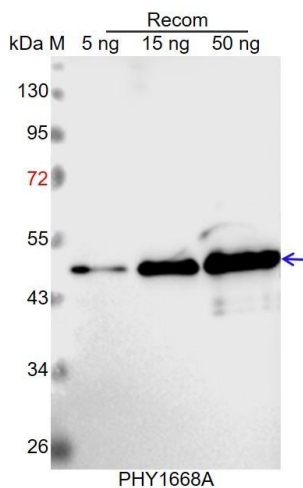
Note: Optimal dilutions/concentrations should be determined by the end user.

Expected / apparent MW: 41 kDa

Predicted Reactivity: Among species analyzed, the sequence of the synthetic peptide used for immunization is 80-99% homologues with the sequence in *Brassica rapa*, *Brassica napus*.

For more species homologues information, please contact tech support at tech@phytoab.com.

Application Example



Recom: 5 ng, 15 ng and 50 ng recombinant protein containing the peptide for immunization and having a molecular mass of 47 kDa.

Electrophoresis: 12% SDS-PAGE

Transfer: blotting to NC (nitrocellulose) membrane for 1 h.

Blocking: 5% skim milk at RT or 4°C for 1 h.

Primary antibody: 1:1000 dilution overnight at 4°C.

Secondary antibody: 1:10000 dilution using Goat Anti-Rabbit IgG H&L (HRP) (Cat# PHY6000).

Detection: using chemiluminescence substrate and image were captured with CCD camera.