

# Anti-RING-box protein 1, C-terminal antibody

Catalog: PHY0908A

## Product Information

<b>Description:</b>	Rabbit polyclonal antibody
<b>Background:</b>	A ring-box 1 like protein is a component of the SCF ubiquitination complex mediating auxin responses. It forms a E3 ubiquitin ligase complex with CUL3A and a BTB domain protein. AtRbx1 expression affects the inducible accumulation of JA-inducible gene expression.
<b>Synonyms:</b>	RBX1, $\alpha$ -Rbx1, ATRBX1, HRT1, REGULATOR OF CULLINS-1, RING-BOX 1, ROC1
<b>Immunogen:</b>	KLH-conjugated synthetic peptide (14 aa from C terminal section) derived from <i>Arabidopsis thaliana</i> RBX1 (AT5G20570).
<b>Form:</b>	Lyophilized
<b>Quantity:</b>	150 $\mu$ g
<b>Purification:</b>	Immunogen affinity purified
<b>Reconstitution:</b>	Reconstitution with 150 $\mu$ l of 0.01 M sterile PBS. "Note: please spin tube briefly prior to opening it to avoid any losses that might occur from lyophilized material adhering to the cap or sides of the tube".
<b>Stability &amp; Storage:</b>	Use a manual defrost freezer and avoid repeated freeze-thaw cycles. 12 months from date of receipt, -20 to -70°C as supplied. 6 months, -20 to -70°C under sterile conditions after reconstitution. 1 month, 2 to 8°C under sterile conditions after reconstitution.
<b>Shipping:</b>	The product is shipped at 4°C. Upon receipt, store it immediately at the temperature recommended above.

## Application Information

<b>Recommended Dilution:</b>	Western Blot (1:1000-1:5000) Note: Optimal dilutions/concentrations should be determined by the end user.
<b>Expected / apparent MW:</b>	16 kDa
<b>Predicted Reactivity:</b>	Among species analyzed, the sequence of the synthetic peptide used for immunization is 100% homologues with the sequence in <i>Solanum tuberosum</i> , <i>Brassica rapa</i> , <i>Oryza sativa</i> , <i>Panicum</i>

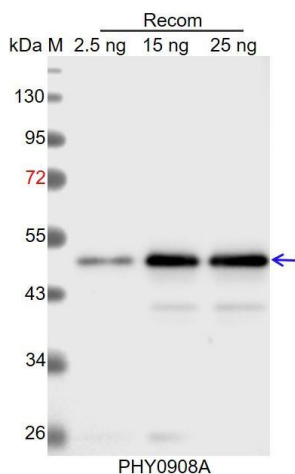
Research Use Only

*virgatum*, *Glycine max*, *Nicotiana tabacum*, *Triticum aestivum*, *Brassica napus*, *Setaria viridis*, *Sorghum bicolor*, *Zea mays*, *Vitis vinifera*, *Hordeum vulgare*, *Spinacia oleracea*, *Gossypium raimondii*, *Solanum lycopersicum*, *Medicago truncatula*, *Cucumis sativus*, *Populus trichocarpa*, and 80-99% homologues with the sequence in *Physcomitrium patens*.

The sequence of the synthetic peptide used for immunization is 86% (12 / 14) homologues with the sequence in RBX1B (AT3G42830).

For more species homologues information, please contact tech support at [tech@phytoab.com](mailto:tech@phytoab.com).

## Application Example



Recom: 2.5 ng, 15 ng and 25ng recombinant protein containing the peptide for immunization and having a molecular mass of 47 kDa.

**Electrophoresis:** 12% SDS-PAGE

**Transfer:** blotting to NC (nitrocellulose) membrane for 1 h.

**Blocking:** 5% skim milk at RT or 4°C for 1 h.

**Primary antibody:** 1:1000 dilution overnight at 4°C.

**Secondary antibody:** 1:10000 dilution using Goat Anti-Rabbit IgG H&L(HRP) (Cat# PHY6000).

**Detection:** using chemiluminescence substrate and image were captured with CCD camera.