

# Anti-Tetraspanin-8, C-terminal antibody

Catalog: PHY1490S

## Product Information

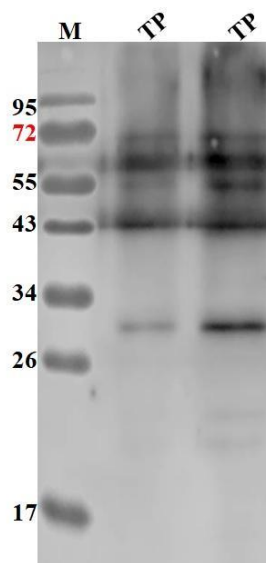
<b>Description:</b>	Rabbit polyclonal antibody
<b>Background:</b>	Tetraspanins are a distinct class of conserved integral proteins. In the Arabidopsis, 17 tetraspanin proteins are identified. They are expressed in different organs/tissues and cell types during embryonic and vegetative development. And the onset of expression coincided with the onset of patterning and cell specification in globular and heart stage embryos (TET1 (AT5G46700), TET3 (AT3G45600), TET4 (AT5G60220), TET5 (AT4G23410), TET8 (AT2G23810), TET10 (AT1G63260), TET13 (AT2G03840), TET14 (AT2G01960), and TET15 (AT5G57810)) and in seedlings at the initiation of the stomatal cell lineage (TET2 (AT2G19580)) or at the asymmetric division in the primary root pericycle upon lateral root initiation (TET13).
<b>Synonyms:</b>	TET8, TETRASPANIN8
<b>Immunogen:</b>	KLH-conjugated synthetic peptide (15 aa from C terminal section) derived from <i>Arabidopsis thaliana</i> TET8 (AT2G23810).
<b>Form:</b>	Lyophilized
<b>Quantity:</b>	150 µg
<b>Purification:</b>	Serum Peptide affinity form antibody available upon request at <a href="mailto:info@phytoab.com">info@phytoab.com</a> .
<b>Reconstitution:</b>	Reconstitution with 150 µl of sterile water. "Note: please spin tube briefly prior to opening it to avoid any losses that might occur from lyophilized material adhering to the cap or sides of the tube".
<b>Stability &amp; Storage:</b>	Use a manual defrost freezer and avoid repeated freeze-thaw cycles. 12 months from date of receipt, -20 to -70°C as supplied. 6 months, -20 to -70°C under sterile conditions after reconstitution. 1 month, 2 to 8°C under sterile conditions after reconstitution.
<b>Shipping:</b>	The product is shipped at 4°C. Upon receipt, store it immediately at the temperature recommended above.

Research Use Only

## Application Information

<b>Recommended Dilution:</b>	Western Blot (1:1000-1:2000)
	Note: Optimal dilutions/concentrations should be determined by the end user.
<b>Expected/apparent MW:</b>	31 kDa
<b>Confirmed Reactivity:</b>	<i>Arabidopsis thaliana</i>
<b>Predicted Reactivity:</b>	Among species analyzed, the sequence of the synthetic peptide used for immunization is 80-99% homologues with the sequence in <i>Brassica napus</i> , <i>Brassica rapa</i> .
	For more species homologues information, please contact tech support at <a href="mailto:tech@phytoab.com">tech@phytoab.com</a> .

## Application Example



PHY1490S

TP: 25 µg and 50 µg total protein from *Arabidopsis thaliana*.

**Electrophoresis:** 15% SDS-Urea-PAGE

**Transfer:** blotting to NC (nitrocellulose) membrane for 1 h.

**Blocking:** 5% skim milk at RT or 4°C for 1 h.

**Primary antibody:** 1:1000 dilution overnight at 4°C.

**Secondary antibody:** 1:10000 dilution using Goat Anti-Rabbit IgG H&L(HRP) (Cat# PHY6000).

**Detection:** using chemiluminescence substrate and image were captured with CCD camera.