

Anti-PLASTID TRANSCRIPTIONALLY ACTIVE 7, N-terminal antibody

Catalog: PHY0398A

Product Information

Description:	Rabbit polyclonal antibody
Background:	In chloroplasts, transcription of plastid genes is mediated by two types of RNA polymerase: plastid-encoded RNA polymerase (PEP) and nuclearencoded RNA polymerase (NEP). Transcription in plastids is also mediated by a number of nuclear-encoded factors in addition to PEP and NEP. In the insoluble RNA polymerase preparation samples, a total of 18 components named as pTACs (pTAC1 to pTAC18) were identified. pTAC7 (AT5G24314) is one of the components associated with PEP complex.
Synonyms:	PTAC7, pTAC7, PDE225, PIGMENT DEFECTIVE 225, PLASTID TRANSCRIPTIONALLY ACTIVE7, TAC7
Immunogen:	KLH-conjugated synthetic peptide (15 aa from N terminal section) derived from <i>Arabidopsis thaliana</i> PTAC7 (AT5G24314).
Form:	Lyophilized
Quantity:	150 µg
Purification:	Immunogen affinity purified
Reconstitution:	Reconstitution with 150 µl of 0.01 M sterile PBS. "Note: please spin tube briefly prior to opening it to avoid any losses that might occur from lyophilized material adhering to the cap or sides of the tube".
Stability & Storage:	Use a manual defrost freezer and avoid repeated freeze-thaw cycles. 12 months from date of receipt, -20 to -70°C as supplied. 6 months, -20 to -70°C under sterile conditions after reconstitution. 1 month, 2 to 8°C under sterile conditions after reconstitution.
Shipping:	The product is shipped at 4°C. Upon receipt, store it immediately at the temperature recommended above.

Application Information

Recommended Dilution:	Western Blot (1:1000-1:2000) Note: Optimal dilutions/concentrations should be determined by the end user.
------------------------------	--

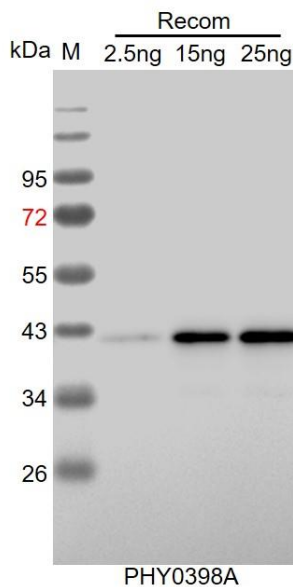
Research Use Only

Expected / apparent MW: 20 kDa

Predicted Reactivity: Among species analyzed, the sequence of the synthetic peptide used for immunization is 80-99% homologues with the sequence in *Brassica rapa*, *Brassica napus*, *Vitis vinifera*, *Oryza sativa*.

For more species homologues information, please contact tech support at tech@phytoab.com.

Application Example



Recom: 2.5 ng, 15 ng and 25 ng recombinant protein containing the peptide for immunization and having a molecular mass of 40 kDa.

Electrophoresis: 12% SDS-PAGE

Transfer: blotting to NC (nitrocellulose) membrane for 1 h.

Blocking: 5% skim milk at RT or 4°C for 1 h.

Primary antibody: 1:1000 dilution overnight at 4°C.

Secondary antibody: 1:10000 dilution using Goat Anti-Rabbit IgG H&L (HRP) (Cat# PHY6000).

Detection: using chemiluminescence substrate and image were captured with CCD camera.