

# Anti-VOLTAGE DEPENDENT ANION CHANNEL 1, antibody

Catalog: PHY0694S

## Product Information

<b>Description:</b>	Rabbit polyclonal antibody
<b>Background:</b>	VDAC1 is a member of voltage-dependent anion channel (VDAC: AT3G01280/VDAC1, AT5G67500/VDAC2, AT5G15090/VDAC3, AT5G57490/VDAC4, AT5G15090/VDAC5). VDACs are reported to be porin-type, beta-barrel diffusion pores. They are prominently localized in the outer mitochondrial membrane and are involved in metabolite exchange between the organelle and the cytosol.
<b>Synonyms:</b>	VDAC1, ARABIDOPSIS THALIANA VOLTAGE DEPENDENT ANION CHANNEL 1, ATVDAC1, VOLTAGE DEPENDENT ANION CHANNEL 1
<b>Immunogen:</b>	KLH-conjugated synthetic peptide (15 aa from C terminal section) derived from <i>Arabidopsis thaliana</i> VDAC1 (AT3G01280).
<b>Form:</b>	Lyophilized
<b>Quantity:</b>	150 µg
<b>Purification:</b>	Serum Peptide affinity form antibody available upon request at <a href="mailto:info@phytoab.com">info@phytoab.com</a> .
<b>Reconstitution:</b>	Reconstitution with 150 µl of sterile water. "Note: please spin tube briefly prior to opening it to avoid any losses that might occur from lyophilized material adhering to the cap or sides of the tube".
<b>Stability &amp; Storage:</b>	Use a manual defrost freezer and avoid repeated freeze-thaw cycles. 12 months from date of receipt, -20 to -70°C as supplied. 6 months, -20 to -70°C under sterile conditions after reconstitution. 1 month, 2 to 8°C under sterile conditions after reconstitution.
<b>Shipping:</b>	The product is shipped at 4°C. Upon receipt, store it immediately at the temperature recommended above.

## Application Information

<b>Recommended Dilution:</b>	Western Blot (1:1000-1:2000) Note: Optimal dilutions/concentrations should be determined by the end user.
------------------------------	--

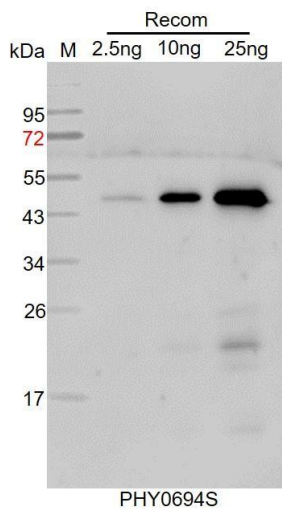
Research Use Only

**Expected / apparent MW:** 29 kDa

**Predicted Reactivity:** Among species analyzed, the sequence of the synthetic peptide used for immunization is 80-99% homologues with the sequence in *Vitis vinifera*, *Brassica napus*, *Cucumis sativus*, *Populus trichocarpa*, *Brassica rapa*, *Gossypium raimondii*, *Spinacia oleracea*, *Glycine max*, *Triticum aestivum*, *Hordeum vulgare*, *Solanum lycopersicum*, *Solanum tuberosum*, *Zea mays*, *Sorghum bicolor*.

For more species homologues information, please contact tech support at [tech@phytoab.com](mailto:tech@phytoab.com).

## Application Example



Recom: 2.5 ng, 10 ng and 25 ng recombinant protein containing the peptide for immunization and having a molecular mass of 45 kDa.

**Electrophoresis:** 12% SDS-PAGE

← **Transfer:** blotting to NC (nitrocellulose) membrane for 1 h.

**Blocking:** 5% skim milk at RT or 4°C for 1 h.

**Primary antibody:** 1:1000 dilution overnight at 4°C.

**Secondary antibody:** 1:10000 dilution using Goat Anti-Rabbit IgG H&L (HRP) (Cat# PHY6000).

**Detection:** using chemiluminescence substrate and image were captured with CCD camera.