

Anti-Glutamate--cysteine ligase, chloroplastic antibody

Catalog: PHY3328A

Product Information

Description:	Rabbit polyclonal antibody
Background:	Gamma-Glutamylcysteine synthetase is one of the enzymes of glutathione (GSH) synthesis. It seems to play an important role in controlling the expression of resistance responses like the regulation of salicylic acid (SA) and phytoalexin (camalexin) production. It is also participates in the detoxification process, the antioxidant response and is essential for embryo development and proper seed maturation.
Synonyms:	GSH1, Gamma-ECS, ATECS1, ATGSH1, CAD2, CADMIUM SENSITIVE 2, GLUTAMATE-CYSTEINE LIGASE, GSHA, PAD2, PHYTOALEXIN DEFICIENT 2, RML1, ROOT MERISTEMLESS 1
Immunogen:	KLH-conjugated synthetic peptide (15 aa from C terminal section) derived from <i>Arabidopsis thaliana</i> GSH1 (AT4G23100).
Form:	Lyophilized
Quantity:	150 µg
Purification:	Immunogen affinity purified
Reconstitution:	Reconstitution with 150 µl of 0.01 M sterile PBS. "Note: please spin tube briefly prior to opening it to avoid any losses that might occur from lyophilized material adhering to the cap or sides of the tube".
Stability & Storage:	Use a manual defrost freezer and avoid repeated freeze-thaw cycles. 12 months from date of receipt, -20 to -70°C as supplied. 6 months, -20 to -70°C under sterile conditions after reconstitution. 1 month, 2 to 8°C under sterile conditions after reconstitution.
Shipping:	The product is shipped at 4°C. Upon receipt, store it immediately at the temperature recommended above.

Application Information

Recommended Dilution:	Western Blot (1:1000-1:2000) Note: Optimal dilutions/concentrations should be determined by the end user.
Expected / apparent MW:	59 kDa

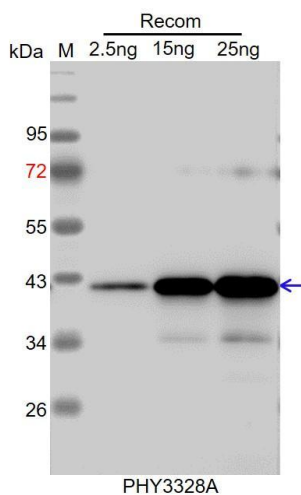
Research Use Only

Predicted Reactivity:

Among species analyzed, the sequence of the synthetic peptide used for immunization is 100% homologues with the sequence in *Oryza sativa*, *Solanum lycopersicum*, *Brassica napus*, *Physcomitrium patens*, *Glycine max*, *Solanum tuberosum*, *Gossypium raimondii*, *Vitis vinifera*, *Populus trichocarpa*, *Nicotiana tabacum*, *Brassica rapa*, *Zea mays*, *Spinacia oleracea*, *Medicago truncatula*, *Sorghum bicolor*, *Setaria viridis*, *Panicum virgatum*, and 80-99% homologues with the sequence in *Cucumis sativus*, *Triticum aestivum*, *Hordeum vulgare*.

For more species homologues information, please contact tech support at tech@phytoab.com.

Application Example



Recom: 2.5 ng, 15 ng and 25 ng recombinant protein containing the peptide for immunization and having a molecular mass of 42 kDa.

Electrophoresis: 12% SDS-PAGE

Transfer: blotting to NC (nitrocellulose) membrane for 1 h.

Blocking: 5% skim milk at RT or 4°C for 1 h.

Primary antibody: 1:1000 dilution overnight at 4°C.

Secondary antibody: 1:10000 dilution using Goat Anti-Rabbit IgG H&L (HRP) (Cat# PHY6000).

Detection: using chemiluminescence substrate and image were captured with CCD camera.