

# Anti-Thiamine thiazole synthase, chloroplastic antibody

Catalog: PHY1022S

## Product Information

<b>Description:</b>	Rabbit polyclonal antibody
<b>Background:</b>	THI1 is involved in biosynthesis of the thiamine precursor thiazole portion of thiamine (vitamin B1). It may have additional roles in adaptation to various stress conditions and in DNA damage tolerance.
<b>Synonyms:</b>	THI1, THI4, THIAMINE4, THIAZOLE REQUIRING, TZ
<b>Immunogen:</b>	KLH-conjugated synthetic peptide (15 aa from C terminal section) derived from <i>Arabidopsis thaliana</i> THI1 (AT5G54770).
<b>Form:</b>	Lyophilized
<b>Quantity:</b>	150 µg
<b>Purification:</b>	Serum
	Peptide affinity form antibody available upon request at <a href="mailto:info@phytoab.com">info@phytoab.com</a> .
<b>Reconstitution:</b>	Reconstitution with 150 µl of sterile water. "Note: please spin tube briefly prior to opening it to avoid any losses that might occur from lyophilized material adhering to the cap or sides of the tube".
<b>Stability &amp;</b>	Use a manual defrost freezer and avoid repeated freeze-thaw cycles.
<b>Storage:</b>	12 months from date of receipt, -20 to -70°C as supplied. 6 months, -20 to -70°C under sterile conditions after reconstitution. 1 month, 2 to 8°C under sterile conditions after reconstitution.
<b>Shipping:</b>	The product is shipped at 4°C. Upon receipt, store it immediately at the temperature recommended above.

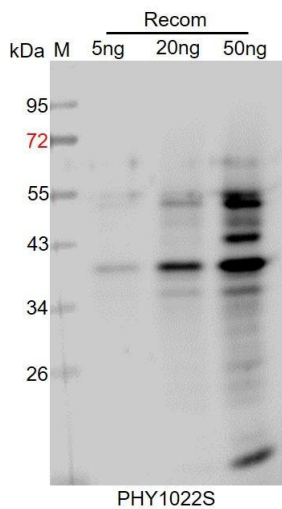
## Application Information

<b>Recommended Dilution:</b>	Western Blot (1:1000-1:2000) Note: Optimal dilutions/concentrations should be determined by the end user.
<b>Expected / apparent MW:</b>	37 kDa
<b>Predicted Reactivity:</b>	Among species analyzed, the sequence of the synthetic peptide used for immunization is 100% homologues with the sequence in <i>Brassica rapa</i> , <i>Brassica napus</i> , <i>Triticum aestivum</i> , <i>Cucumis sativus</i> , <i>Nicotiana tabacum</i> , <i>Spinacia oleracea</i> , <i>Solanum tuberosum</i> , <i>Gossypium</i>

Research Use Only

*raimondii*, *Zea mays*, *Oryza sativa*, *Vitis vinifera*, *Sorghum bicolor*, *Solanum lycopersicum*, *Panicum virgatum*, *Hordeum vulgare*, *Setaria viridis*, *Glycine max*, *Populus trichocarpa*, *Medicago truncatula*, and 80-99% homologues with the sequence in *Physcomitrium patens*. For more species homologues information, please contact tech support at [tech@phytoab.com](mailto:tech@phytoab.com).

## Application Example



Recom: 5 ng, 20 ng and 50 ng recombinant protein containing the peptide for immunization and having a molecular mass of 40 kDa.

**Electrophoresis:** 12% SDS-PAGE

**Transfer:** blotting to NC (nitrocellulose) membrane for 1 h.

**Blocking:** 5% skim milk at RT or 4°C for 1 h.

**Primary antibody:** 1:1000 dilution overnight at 4°C.

**Secondary antibody:** 1:10000 dilution using Goat Anti-Rabbit IgG H&L (HRP) (Cat# PHY6000).

**Detection:** using chemiluminescence substrate and image were captured with CCD camera.