

Anti-AT5G60600 antibody

Catalog: PHY0887S

Product Information

Description:	Rabbit polyclonal antibody
Background:	HDS is a chloroplast-localized hydroxy-2-methyl-2-(E)-butenyl 4-diphosphate (HMBPP) synthase (HDS), it catalyzes the formation of HMBPP from 2-C-methyl-D-erythrytol 2,4-cyclodiphosphate (MEcPP).
Synonyms:	HDS, GCPE, 4-HYDROXY-3-METHYLBUT-2-ENYL DIPHOSPHATE SYNTHASE, CHLOROPLAST BIOGENESIS 4, CLB4, CONSTITUTIVE SUBTILISIN 3, CSB3, ISPG
Immunogen:	KLH-conjugated synthetic peptide (16 aa from Central section) derived from <i>Arabidopsis thaliana</i> HDS (AT5G60600).
Form:	Lyophilized
Quantity:	150 µg
Purification:	Serum Peptide affinity form antibody available upon request at info@phytoab.com .
Reconstitution:	Reconstitution with 150 µl of sterile water. "Note: please spin tube briefly prior to opening it to avoid any losses that might occur from lyophilized material adhering to the cap or sides of the tube".
Stability & Storage:	Use a manual defrost freezer and avoid repeated freeze-thaw cycles. 12 months from date of receipt, -20 to -70°C as supplied. 6 months, -20 to -70°C under sterile conditions after reconstitution. 1 month, 2 to 8°C under sterile conditions after reconstitution.
Shipping:	The product is shipped at 4°C. Upon receipt, store it immediately at the temperature recommended above.

Application Information

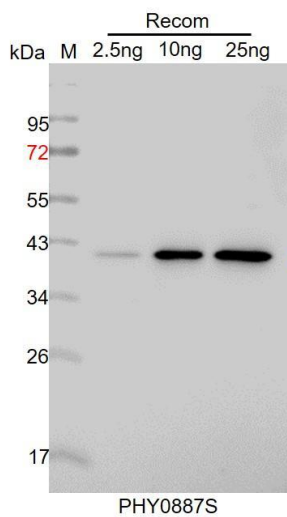
Recommended Dilution:	Western Blot (1:1000-1:2000) Note: Optimal dilutions/concentrations should be determined by the end user.
Expected / apparent MW:	82 kDa
Predicted Reactivity:	Among species analyzed, the sequence of the synthetic peptide used for immunization is 100% homologues with the sequence in <i>Brassica</i>

Research Use Only

napus, Zea mays, Sorghum bicolor, Panicum virgatum, Cucumis sativus, Brassica rapa, Spinacia oleracea, Populus trichocarpa, Medicago truncatula, and 80-99% homologues with the sequence in Triticum aestivum, Setaria viridis, Hordeum vulgare subsp. vulgare, Solanum tuberosum, Nicotiana tabacum, Solanum lycopersicum, Vitis vinifera, Gossypium raimondii, Physcomitrium patens, Glycine max, Oryza sativa.

For more species homologues information, please contact tech support at tech@phytoab.com.

Application Example



Recom: 2.5 ng, 10 ng and 25 ng recombinant protein containing the peptide for immunization and having a molecular mass of 42 kDa.

Electrophoresis: 12% SDS-PAGE

Transfer: blotting to NC (nitrocellulose) membrane for 1 h.

Blocking: 5% skim milk at RT or 4°C for 1 h.

Primary antibody: 1:1000 dilution overnight at 4°C.

Secondary antibody: 1:10000 dilution using Goat Anti-Rabbit IgG H&L (HRP) (Cat# PHY6000).

Detection: using chemiluminescence substrate and image were captured with CCD camera.