

# Anti-Tubulin beta-2 chain antibody

Catalog: PHY0613

## Product Information

|                                 |   |
|---------------------------------|---|
| <b>Description:</b>             | Rabbit polyclonal antibody  |
| <b>Background:</b>              | Tubulin is the major constituent of microtubules. It binds two moles of GTP, one at an exchangeable site on the beta chain and one at a non-exchangeable site on the alpha chain.   |
| <b>Synonyms:</b>                | TUB2, TUBULIN BETA CHAIN 2  |
| <b>Immunogen:</b>               | Recombinant protein of Tubulin beta derived from <i>Arabidopsis thaliana</i> AT5G62690.   |
| <b>Form:</b>                    | Lyophilized   |
| <b>Quantity:</b>                | 150 µg  |
| <b>Purification:</b>            | Protein A purified  |
| <b>Reconstitution:</b>          | Reconstitution with 150µl of 0.01M sterile PBS.<br>"Note: please spin tube briefly prior to opening it to avoid any losses that might occur from lyophilized material adhering to the cap or sides of the tube".  |
| <b>Stability &amp; Storage:</b> | Use a manual defrost freezer and avoid repeated freeze-thaw cycles.<br>12 months from date of receipt, -20 to -70°C as supplied.<br>6 months, -20 to -70°C under sterile conditions after reconstitution.<br>1 month, 2 to 8°C under sterile conditions after reconstitution. |
| <b>Shipping:</b>                | The product is shipped at 4°C. Upon receipt, store it immediately at the temperature recommended above.   |

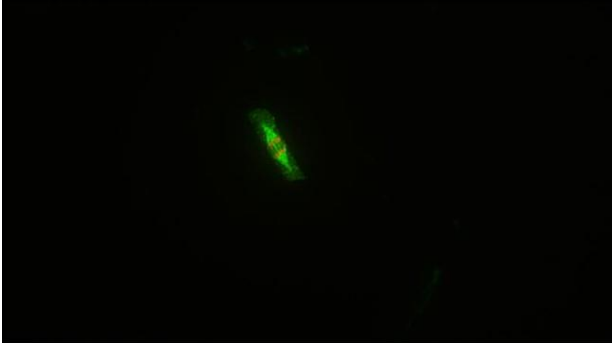
## Application Information

|                                |  |
|--------------------------------|--|
| <b>Recommended Dilution:</b>   | Western Blot (1:1000-1:2000); IL<br>Note: Optimal dilutions/concentrations should be determined by the end user.                 |
| <b>Expected / apparent MW:</b> | 51 kDa   |
| <b>Confirmed Reactivity:</b>   | <i>Arabidopsis thaliana</i>  |
| <b>Predicted Reactivity:</b>   | For more species homologues information, please contact tech support at <a href="mailto:tech@phytoab.com">tech@phytoab.com</a> . |

Research Use Only

## Application Example

Immunolocalization using anti-Tubulin beta chain antibody.



PHY0613