

# Anti-Tubulin alpha chain antibody

Catalog: PHY0612

## Product Information

<b>Description:</b>	Rabbit polyclonal antibody
<b>Background:</b>	Tubulin in molecular biology can refer either to the tubulin protein superfamily of globular proteins, or one of the member proteins of that superfamily. The tubulin superfamily contains six families of tubulins (alpha-, beta-, gamma-, delta-, epsilon and zeta-tubulins). Tubulin alpha (TUA) together with beta tubulin is making up microtubules.
<b>Synonyms:</b>	Tubulin alpha, $\alpha$ -tubulin
<b>Immunogen:</b>	Recombinant protein Tubulin alpha (1-450aa) derived from <i>Arabidopsis thaliana</i> AT1G64740.
<b>Form:</b>	Lyophilized
<b>Quantity:</b>	150 $\mu$ g
<b>Purification:</b>	Protein A purified
<b>Reconstitution:</b>	Reconstitution with 150 $\mu$ l of 0.01 M sterile PBS. "Note: please spin tube briefly prior to opening it to avoid any losses that might occur from lyophilized material adhering to the cap or sides of the tube".
<b>Stability &amp; Storage:</b>	Use a manual defrost freezer and avoid repeated freeze-thaw cycles. 12 months from date of receipt, -20 to -70°C as supplied. 6 months, -20 to -70°C under sterile conditions after reconstitution. 1 month, 2 to 8°C under sterile conditions after reconstitution.
<b>Shipping:</b>	The product is shipped at 4°C. Upon receipt, store it immediately at the temperature recommended above.

## Application Information

<b>Recommended Dilution:</b>	Western Blot (1:1000-1:4000); IL Note: Optimal dilutions/concentrations should be determined by the end user.
<b>Expected / apparent MW:</b>	50 / 45 kDa
<b>Confirmed Reactivity:</b>	<i>Arabidopsis thaliana</i>

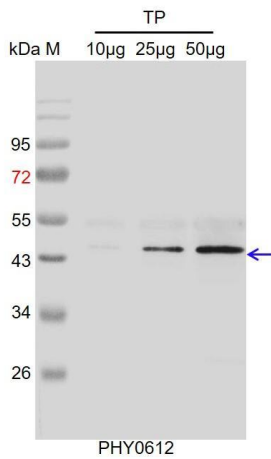
Research Use Only

**Predicted Reactivity:**

For more species homologues information, please contact tech support at [tech@phytoab.com](mailto:tech@phytoab.com).

**Application Example**

**Example 1**



TP: 10 µg, 25 µg and 50 µg total protein from *Arabidopsis thaliana*, respectively.

**Electrophoresis:** 12% SDS-PAGE

**Transfer:** blotting to NC (nitrocellulose) membrane for 1 h.

**Blocking:** 5% skim milk at RT or 4°C for 1 h.

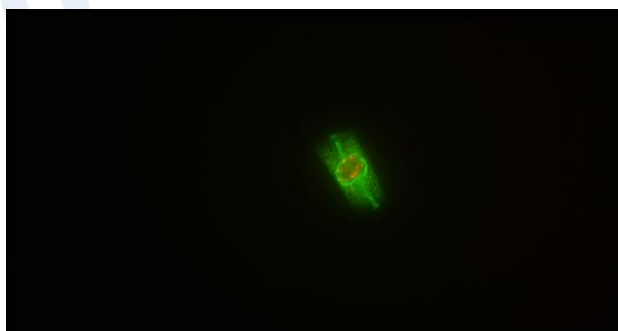
**Primary antibody:** 1:4000 dilution overnight at 4°C.

**Secondary antibody:** 1:10000 dilution using Goat Anti-Rabbit IgG H&L (HRP) (Cat# PHY6000).

**Detection:** using chemiluminescence substrate and image were captured with CCD camera.

**Example 2**

Immunolocalization using anti-Tubulin alpha chain antibody.



PHY0612