

Anti-Actin antibody

Catalog: PHY0001

Product Information

Description:	Mouse monoclonal antibody
Background:	Actin is an ancient conserved protein that is encoded by multiple isoforms in multi-cellular organisms. There are eight functional actin genes in the Arabidopsis genome.
Synonyms:	Actin, Act
Immunogen:	Recombinant protein of Actin11 (1-377 aa) derived from <i>Arabidopsis thaliana</i> AT3G12110.
Form:	Lyophilized
Quantity:	150 µg
Purification:	Protein A purified
Reconstitution:	Reconstitution with 150 µl of 0.01 M sterile PBS. "Note: please spin tube briefly prior to opening it to avoid any losses that might occur from lyophilized material adhering to the cap or sides of the tube".
Stability & Storage:	Use a manual defrost freezer and avoid repeated freeze-thaw cycles. 12 months from date of receipt, -20 to -70°C as supplied. 6 months, -20 to -70°C under sterile conditions after reconstitution. 1 month, 2 to 8°C under sterile conditions after reconstitution.
Shipping:	The product is shipped at 4°C. Upon receipt, store it immediately at the temperature recommended above.

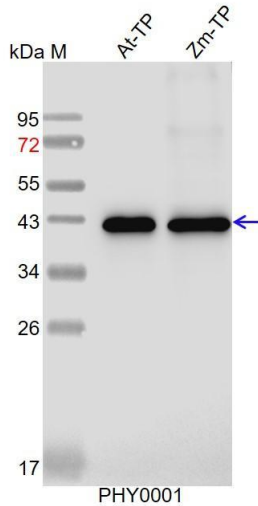
Application Information

Recommended Dilution:	Western Blot (1:1000-1:2000) Note: Optimal dilutions/concentrations should be determined by the end user.
Expected / apparent MW:	43 kDa
Confirmed Reactivity:	<i>Arabidopsis thaliana</i> , <i>Zea mays</i> , <i>Oryza sativa</i>
Predicted Reactivity:	For more species homologues information, please contact tech support at tech@phytoab.com .

Research Use Only

Application Example

Example 1



At-TP: 15 μ g total protein from *Arabidopsis thaliana*.

Zm-TP: 15 μ g total protein from *Zea mays*.

Electrophoresis: 15% SDS-PAGE

Transfer: blotting to NC (nitrocellulose) membrane for 1 h.

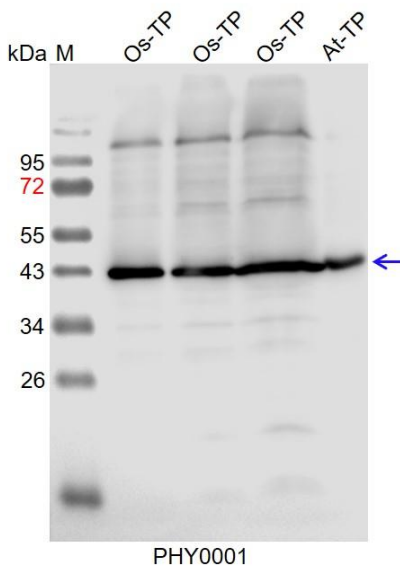
Blocking: 5% skim milk at RT or 4°C for 1 h.

Primary antibody: 1:2000 dilution overnight at 4°C.

Secondary antibody: 1:5000 dilution using Goat Anti-Mouse IgG H&L (HRP) (Cat# PHY6006)

Detection: using chemiluminescence substrate and image were captured with CCD camera.

Example 2



Os-TP: 10 μ g, 20 μ g and 50 μ g total protein from *Oryza sativa*.

At-TP: 30 μ g total protein from *Arabidopsis thaliana*.

Electrophoresis: 15% SDS-PAGE

Transfer: blotting to NC (nitrocellulose) membrane for 1 h.

Blocking: 5% skim milk at RT or 4°C for 1 h.

Primary antibody: 1:1000 dilution overnight at 4°C.

Secondary antibody: 1:5000 dilution using Goat Anti-Mouse IgG H&L (HRP) (Cat# PHY6006)

Detection: using chemiluminescence substrate and image were captured with CCD camera.