

Anti-Shaggy-related protein kinase eta antibody

Catalog: PHY7177S

Product Information

| | |
|---------------------------------|--|
| Description: | Rabbit polyclonal antibody |
| Background: | BIN2 is a member of the ATSK (shaggy-like kinase) family. BIN2 functions in the cross-talk between auxin and brassinosteroid signaling pathways. BIN2 regulates root epidermal cell fate specification by phosphorylating EGL3 and TTG1. BIN2-mediated phosphorylation appears to promote BZR1 export from the nucleus. KIB1 interacts with BIN2 blocking its interaction with substrates and promotes BIN2 degradation. |
| Synonyms: | SK21, ATSK21, BIN2, BRASSINOSTEROID-INSENSITIVE 2, DWARF 12, DWF12, SHAGGY-LIKE KINASE 21, UCU1, ULTRACURVATA 1 |
| Immunogen: | KLH-conjugated synthetic peptide (15 aa from Central section) derived from <i>Arabidopsis thaliana</i> SK21 (AT4G18710). |
| Form: | Lyophilized |
| Quantity: | 150 µg |
| Purification: | Serum Peptide affinity form antibody available upon request at info@phytoab.com . |
| Reconstitution: | Reconstitution with 150 µl of sterile water. "Note: please spin tube briefly prior to opening it to avoid any losses that might occur from lyophilized material adhering to the cap or sides of the tube". |
| Stability & Storage: | Use a manual defrost freezer and avoid repeated freeze-thaw cycles. 12 months from date of receipt, -20 to -70°C as supplied. 6 months, -20 to -70°C under sterile conditions after reconstitution. 1 month, 2 to 8°C under sterile conditions after reconstitution. |
| Shipping: | The product is shipped at 4°C. Upon receipt, store it immediately at the temperature recommended above. |

Application Information

| | |
|--------------------------------|--|
| Recommended Dilution: | Western Blot (1:1000-1:2000) Note: Optimal dilutions/concentrations should be determined by the end user. |
| Expected / apparent MW: | 43 kDa |

Research Use Only

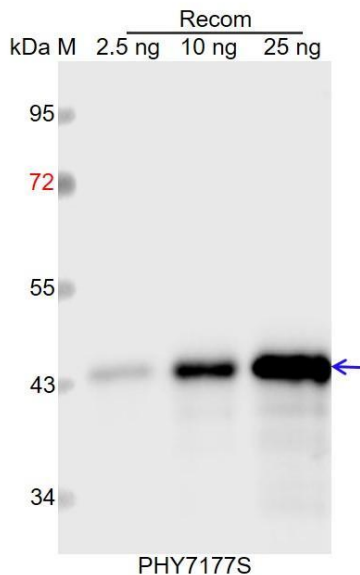
Predicted Reactivity:

Among species analyzed, the sequence of the synthetic peptide used for immunization is 100% homologues with the sequence in *Brassica rapa*, *Brassica napus*, and 80-99% homologues with the sequence in *Zea mays*, *Sorghum bicolor*, *Setaria viridis*, *Panicum virgatum*, *Oryza sativa*, *Medicago truncatula*, *Glycine max*, *Vitis vinifera*, *Solanum tuberosum*, *Gossypium raimondii*, *Spinacia oleracea*, *Nicotiana tabacum*, *Solanum lycopersicum*, *Populus trichocarpa*.

The sequence of the synthetic peptide used for immunization is 93% (14/15) homologues with the sequence in AT2G30980 (SK23); 87% (13/15) homologues with the sequence in AT1G57870 (SK42), AT1G09840 (SK41), AT5G14640 (SK13), AT3G05840 (SK12), AT1G06390 (SK22), AT5G26751 (SK11); and 80% (12/15) homologues with the sequence in AT4G00720 (SK32).

For more species homologues information, please contact tech support at tech@phytoab.com.

Application Example



Recom: 2.5 ng, 10 ng and 25 ng recombinant protein containing the peptide for immunization and having a molecular mass of 45 kDa.

Electrophoresis: 12% SDS-PAGE

Transfer: blotting to NC (nitrocellulose) membrane for 1 h.

Blocking: 5% skim milk at RT or 4°C for 1 h.

Primary antibody: 1:1000 dilution overnight at 4°C.

Secondary antibody: 1:10000 dilution using Goat Anti-Rabbit IgG H&L (HRP) (Cat# PHY6000).

Detection: using chemiluminescence substrate and image were captured with CCD camera.