

Anti-Thioredoxin-like fold domain-containing protein MRL7, chloroplastic antibody

Catalog: PHY2506S

Product Information

Description:	Rabbit polyclonal antibody
Background:	SVR4 is a dual-targeted nuclear/plastidial phytochrome signaling component required for PEP assembly. It controls PhAPG expression primarily from the nucleus by interacting with phytochromes and promoting their localization to photobodies for the degradation of the transcriptional regulators PIF1 and PIF3.
Synonyms:	SVR4, ATECB1, EARLY CHLOROPLAST BIOGENESIS 1, ECB1, MESOPHYLL-CELL RNAI LIBRARY LINE 7, MRL7, PDE333, PIGMENT DEFECTIVE EMBRYO 333, RCB, REGULATOR OF CHLOROPLAST BIOGENESIS, SUPPRESSOR OF VARIEGATION 4
Immunogen:	KLH-conjugated synthetic peptide (14 aa from Central section) derived from <i>Arabidopsis thaliana</i> SVR4 (AT4G28590).
Form:	Lyophilized
Quantity:	150 µg
Purification:	Serum Peptide affinity form antibody available upon request at info@phytoab.com .
Reconstitution:	Reconstitution with 150 µl of sterile water. "Note: please spin tube briefly prior to opening it to avoid any losses that might occur from lyophilized material adhering to the cap or sides of the tube".
Stability & Storage:	Use a manual defrost freezer and avoid repeated freeze-thaw cycles. 12 months from date of receipt, -20 to -70°C as supplied. 6 months, -20 to -70°C under sterile conditions after reconstitution. 1 month, 2 to 8°C under sterile conditions after reconstitution.
Shipping:	The product is shipped at 4°C. Upon receipt, store it immediately at the temperature recommended above.

Application Information

Recommended Dilution:	Western Blot (1:1000-1:2000) Note: Optimal dilutions/concentrations should be determined by the
------------------------------	--

Research Use Only

end user.

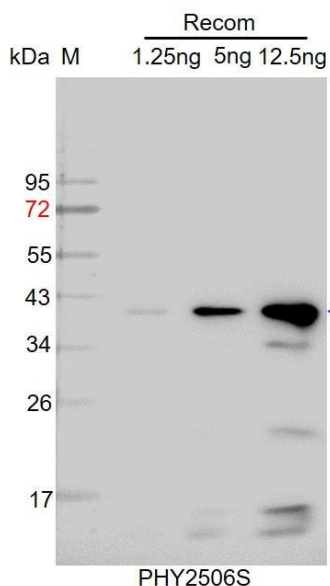
Expected / apparent MW: 38 kDa

Predicted Reactivity: Among species analyzed, the sequence of the synthetic peptide used for immunization is 80-99% homologues with the sequence in *Gossypium raimondii*, *Cucumis sativus*, *Solanum tuberosum*, *Nicotiana tabacum*, *Solanum lycopersicum*, *Glycine max*, *Spinacia oleracea*, *Brassica napus*, *Brassica rapa*.

The sequence of the synthetic peptide used for immunization is 82% homologues with the sequence in BOA (AT5G59570).

For more species homologues information, please contact tech support at tech@phytoab.com.

Application Example



Recom: 1.25 ng, 5 ng and 12.5 ng recombinant protein containing the peptide for immunization and having a molecular mass of 40 kDa.

Electrophoresis: 12% SDS-PAGE

Transfer: blotting to NC (nitrocellulose) membrane for 1 h.

Blocking: 5% skim milk at RT or 4°C for 1 h.

Primary antibody: 1:1000 dilution overnight at 4°C.

Secondary antibody: 1:10000 dilution using Goat Anti-Rabbit IgG H&L (HRP) (Cat# PHY6000).

Detection: using chemiluminescence substrate and image were captured with CCD camera.