

# Anti-Nitrate reductase antibody

Catalog: PHY5316S

## Product Information

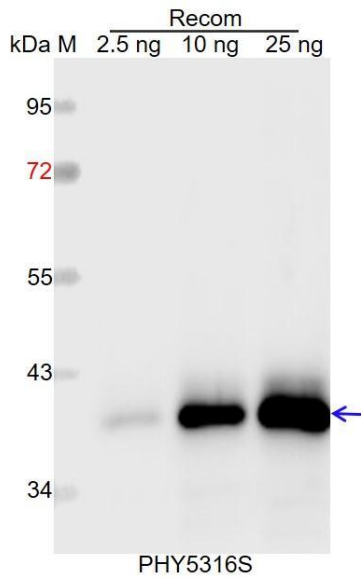
|                                 |  |
|---------------------------------|--|
| <b>Description:</b>             | Rabbit polyclonal antibody   |
| <b>Background:</b>              | narB   |
| <b>Synonyms:</b>                | narB   |
| <b>Immunogen:</b>               | KLH-conjugated synthetic peptide (19 aa from C terminal section) derived from <i>Synechocystis sp.</i> PCC 6803 narB (sll1454).  |
| <b>Form:</b>                    | Lyophilized  |
| <b>Quantity:</b>                | 150 µg   |
| <b>Purification:</b>            | Serum<br>Peptide affinity form antibody available upon request at <a href="mailto:info@phytoab.com">info@phytoab.com</a> .   |
| <b>Reconstitution:</b>          | Reconstitution with 150 µl of sterile water.<br>"Note: please spin tube briefly prior to opening it to avoid any losses that might occur from lyophilized material adhering to the cap or sides of the tube".  |
| <b>Stability &amp; Storage:</b> | Use a manual defrost freezer and avoid repeated freeze-thaw cycles.<br>12 months from date of receipt, -20 to -70 °C as supplied.<br>6 months, -20 to -70 °C under sterile conditions after reconstitution.<br>1 month, 2 to 8 °C under sterile conditions after reconstitution. |
| <b>Shipping:</b>                | The product is shipped at 4 °C. Upon receipt, store it immediately at the temperature recommended above.   |

## Application Information

|                                |   |
|--------------------------------|---|
| <b>Recommended Dilution:</b>   | Western Blot (1:1000-1:2000)<br>Note: Optimal dilutions/concentrations should be determined by the end user.                                |
| <b>Expected / apparent MW:</b> | 77 kDa  |
| <b>Predicted Reactivity:</b>   | For homologues with other species especially algae, please contact tech support at <a href="mailto:tech@phytoab.com">tech@phytoab.com</a> . |

Research Use Only

## Application Example



Recom: 2.5 ng, 10 ng and 25 ng recombinant protein containing the peptide for immunization and having a molecular mass of 40 kDa.

**Electrophoresis:** 12% SDS-PAGE

**Transfer:** blotting to NC (nitrocellulose) membrane for 1 h.

**Blocking:** 5% skim milk at RT or 4°C for 1 h.

**Primary antibody:** 1:1000 dilution overnight at 4°C.

**Secondary antibody:** 1:10000 dilution using Goat Anti-Rabbit IgG H&L (HRP) (Cat# PHY6000).

**Detection:** using chemiluminescence substrate and image were captured with CCD camera.