

Anti-Heat shock protein 90-5, chloroplastic antibody

Catalog: PHY7266S

Product Information

| | |
|---------------------------------|---|
| Description: | Rabbit polyclonal antibody |
| Background: | CR88 is a chloroplast-targeted 90-kDa heat shock protein located in the stroma involved in red-light mediated deetiolation response and crucial for protein import into the chloroplast stroma. |
| Synonyms: | CR88, ATHSP90.5, ATHSP90C, EMB1956, EMBRYO DEFECTIVE 1956, HEAT SHOCK PROTEIN 88.1, HEAT SHOCK PROTEIN 90.5, HSP88.1, HSP90.5, HSP90C |
| Immunogen: | KLH-conjugated synthetic peptide (17 aa from N terminal section) derived from <i>Arabidopsis thaliana</i> CR88 (AT2G04030). |
| Form: | Lyophilized |
| Quantity: | 150 µg |
| Purification: | Serum Peptide affinity form antibody available upon request at info@phytoab.com . |
| Reconstitution: | Reconstitution with 150 µl of sterile water. "Note: please spin tube briefly prior to opening it to avoid any losses that might occur from lyophilized material adhering to the cap or sides of the tube". |
| Stability & Storage: | Use a manual defrost freezer and avoid repeated freeze-thaw cycles. 12 months from date of receipt, -20 to -70°C as supplied. 6 months, -20 to -70°C under sterile conditions after reconstitution. 1 month, 2 to 8°C under sterile conditions after reconstitution. |
| Shipping: | The product is shipped at 4°C. Upon receipt, store it immediately at the temperature recommended above. |

Application Information

| | |
|--------------------------------|---|
| Recommended Dilution: | Western Blot (1:1000-1:2000) Note: Optimal dilutions/concentrations should be determined by the end user. |
| Expected / apparent MW: | 89 kDa |
| Predicted Reactivity: | Among species analyzed, the sequence of the synthetic peptide used for immunization is 100% homologues with the sequence in |

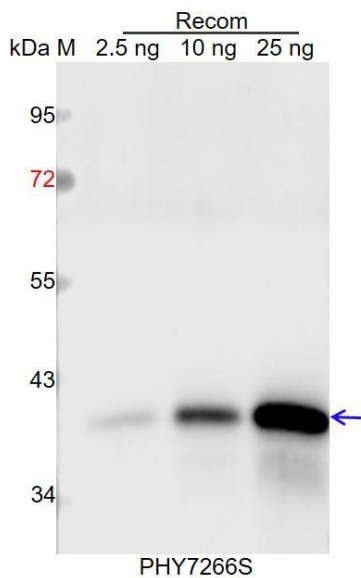
Research Use Only

Brassica napus, Glycine max, Gossypium raimondii, Sorghum bicolor, Zea mays, Nicotiana tabacum, Solanum tuberosum, Medicago truncatula, Oryza sativa Japonica Group, Setaria viridis, Brassica rapa, Solanum lycopersicum, and 80-99% homologues with the sequence in Panicum virgatum, Hordeum vulgare, Triticum aestivum, Populus trichocarpa, Vitis vinifera, Cucumis sativus, Spinacia oleracea.

The sequence of the synthetic peptide used for immunization is 94% homologues with the sequence in PCK1 (AT4G37870).

For more species homologues information, please contact tech support at tech@phytoab.com.

Application Example



Recom: 2.5 ng, 10 ng and 25 ng recombinant protein containing the peptide for immunization and having a molecular mass of 39 kDa.

Electrophoresis: 12% SDS-PAGE

Transfer: blotting to NC (nitrocellulose) membrane for 1 h.

Blocking: 5% skim milk at RT or 4°C for 1 h.

Primary antibody: 1:1000 dilution overnight at 4°C.

Secondary antibody: 1:10000 dilution using Goat Anti-Rabbit IgG

H&L (HRP) (Cat# PHY6000).

Detection: using chemiluminescence substrate and image were captured with CCD camera.