

# Anti-Serine/threonine-protein phosphatase PP2A-1/2 catalytic subunit antibody

Catalog: PHY0813S

## Product Information

<b>Description:</b>	Rabbit polyclonal antibody
<b>Background:</b>	PP2A-1 and PP2A-2 are the members of the isoforms of the catalytic subunit of protein phosphatase 2A: AT1G59830/PP2A-1, AT1G10430/PP2A-2, AT2G42500/PP2A-3, AT3G58500 / PP2A-4. It regulates the activation of ADF/cofilin, which, in turn, regulates actin cytoskeleton remodeling and is involved in phot2-mediated chloroplast avoidance movements.
<b>Synonyms:</b>	PP2A1/2, PP2A-1/2, PROTEIN PHOSPHATASE 2A-1/2
<b>Immunogen:</b>	KLH-conjugated synthetic peptide (13 aa from C terminal section) derived from <i>Arabidopsis thaliana</i> PP2A1 (AT1G59830) and PP2A2 (AT1G10430).
<b>Form:</b>	Lyophilized
<b>Quantity:</b>	150 µg
<b>Purification:</b>	Serum Peptide affinity form antibody available upon request at <a href="mailto:info@phytoab.com">info@phytoab.com</a> .
<b>Reconstitution:</b>	Reconstitution with 150 µl of sterile water. "Note: please spin tube briefly prior to opening it to avoid any losses that might occur from lyophilized material adhering to the cap or sides of the tube".
<b>Stability &amp; Storage:</b>	Use a manual defrost freezer and avoid repeated freeze-thaw cycles. 12 months from date of receipt, -20 to -70°C as supplied. 6 months, -20 to -70°C under sterile conditions after reconstitution. 1 month, 2 to 8°C under sterile conditions after reconstitution.
<b>Shipping:</b>	The product is shipped at 4°C. Upon receipt, store it immediately at the temperature recommended above.

## Application Information

<b>Recommended Dilution:</b>	Western Blot (1:1000-1:2000) Note: Optimal dilutions/concentrations should be determined by the end user.
<b>Expected / apparent MW:</b>	35 kDa

Research Use Only

**Confirmed Reactivity:**

**Predicted Reactivity:**

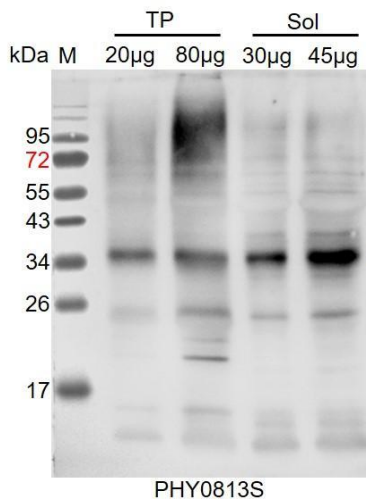
*Arabidopsis thaliana*

Among species analyzed, the sequence of the synthetic peptide used for immunization is 100% homologues with the sequence in *Cucumis sativus*, *Zea mays*, *Glycine max*, *Solanum tuberosum*, *Brassica napus*, *Solanum lycopersicum*, *Brassica rapa*, *Populus trichocarpa*, *Oryza sativa*, *Vitis vinifera*, *Triticum aestivum*, *Panicum virgatum*, *Spinacia oleracea*, *Nicotiana tabacum*, *Sorghum bicolor*, *Gossypium raimondii*, *Hordeum vulgare subsp. vulgare*, *Medicago truncatula*, *Nicotiana tabacum*, *Setaria viridis*, and 80-99% homologues with the sequence in *Physcomitrium patens*

The sequence of the synthetic peptide used for immunization is 92% homologues with the sequence in PP2A-5 (AT1G69960), and 84% homologues with the sequence in PP2A-3 (AT2G42500), PP2A-4 (AT3G58500).

For more species homologues information, please contact tech support at [tech@phytoab.com](mailto:tech@phytoab.com).

## Application Example Example1:



TP: 20 µg and 80µg total protein from *Arabidopsis thaliana*.

Sol: 30 µg and 45 µg soluble protein from *Arabidopsis thaliana*.

**Electrophoresis:** 15% SDS-PAGE

**Transfer:** blotting to NC (nitrocellulose) membrane for 1 h.

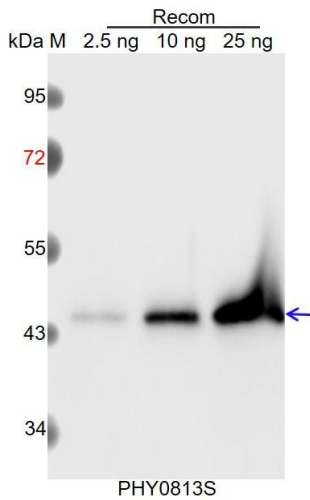
**Blocking:** 5% skim milk at RT or 4°C for 1 h.

**Primary antibody:** 1:1000 dilution overnight at 4°C.

**Secondary antibody:** 1:10000 dilution using Goat Anti-Rabbit IgG H&L(HRP) (Cat# PHY6000)

**Detection:** using chemiluminescence substrate and image were captured with CCD camera.

## Example2:



Recom: 2.5 ng, 10 ng and 25 ng recombinant protein containing the peptide for immunization and having a molecular mass of 45 kDa.

**Electrophoresis:** 12% SDS-PAGE

**Transfer:** blotting to NC (nitrocellulose) membrane for 1 h.

**Blocking:** 5% skim milk at RT or 4°C for 1 h.

**Primary antibody:** 1:1000 dilution overnight at 4°C.

**Secondary antibody:** 1:10000 dilution using Goat Anti-Rabbit IgG H&L (HRP) (Cat# PHY6000).

**Detection:** using chemiluminescence substrate and image were captured with CCD camera.