

Anti-Thioredoxin H5 antibody

Catalog: PHY1547S

Product Information

Description:	Rabbit polyclonal antibody
Background:	Thioredoxin (Trx) is a ubiquitous multifunctional redox protein with a single disulfide bridge. It functions as a general disulfide oxidoreductase and is involved in numerous redox-dependent cellular processes including activation of ribonucleotide reductase, modulation of transcription factors, promotion of a variety of tumors, and photosynthetic activity of plant cells. Trxs proteins are including trxH1 (AT3G51030), trxH2 (AT5G39950), trxH3 (AT5G42980), trxH4 (AT1G19730) and trxH5 (AT1G45145).
Synonyms:	trxH5, ATH5, ATTRX5, LIV1, LOCUS OF INSENSITIVITY TO VICTORIN 1, THIOREDOXIN H-TYPE 5, TRX5
Immunogen:	KLH-conjugated synthetic peptide (15 aa from C terminal section) derived from <i>Arabidopsis thaliana</i> trxH5 (AT1G45145).
Form:	Lyophilized
Quantity:	150 µg
Purification:	Serum Peptide affinity form antibody available upon request at info@phytoab.com .
Reconstitution:	Reconstitution with 150 µl of sterile water. "Note: please spin tube briefly prior to opening it to avoid any losses that might occur from lyophilized material adhering to the cap or sides of the tube".
Stability & Storage:	Use a manual defrost freezer and avoid repeated freeze-thaw cycles. 12 months from date of receipt, -20 to -70°C as supplied. 6 months, -20 to -70°C under sterile conditions after reconstitution. 1 month, 2 to 8°C under sterile conditions after reconstitution.
Shipping:	The product is shipped at 4°C. Upon receipt, store it immediately at the temperature recommended above.

Application Information

Recommended Dilution:	Western Blot (1:1000-1:2000) Note: Optimal dilutions/concentrations should be determined by the end user.
------------------------------	--

Research Use Only

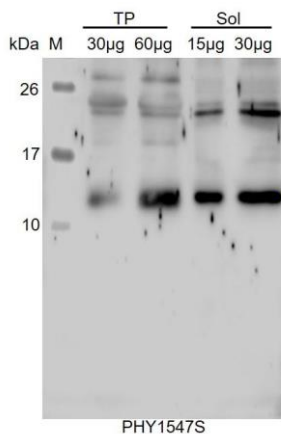
Expected / apparent MW: 13 kDa

Confirmed Reactivity: *Arabidopsis thaliana*

Predicted Reactivity: For more species homologues information, please contact tech support at tech@phytoab.com.

Application Example

Example1:



TP: 30 µg and 60 µg total protein from *Arabidopsis thaliana*, respectively.

Sol: 15 µg and 30 µg soluble protein from *Arabidopsis thaliana*, respectively.

Electrophoresis: 15% SDS-PAGE

Transfer: blotting to NC (nitrocellulose) membrane for 1 h.

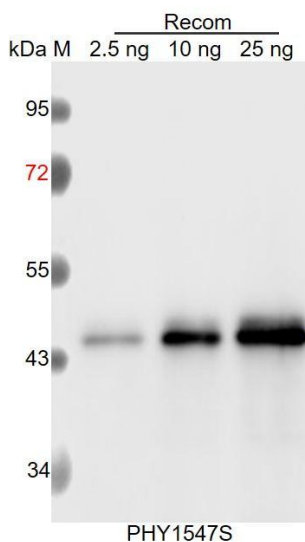
Blocking: 5% skim milk at RT or 4°C for 1 h.

Primary antibody: 1:1000 dilution overnight at 4°C.

Secondary antibody: 1:10000 dilution using Goat Anti-Rabbit IgG H&L(HRP) (Cat# PHY6000).

Detection: using chemiluminescence substrate and image were captured with CCD camera.

Example2:



Recom: 2.5 ng, 10 ng and 25 ng recombinant protein containing the peptide for immunization and having a molecular mass of 45 kDa.

Electrophoresis: 12% SDS-PAGE

Transfer: blotting to NC (nitrocellulose) membrane for 1 h.

Blocking: 5% skim milk at RT or 4°C for 1 h.

Primary antibody: 1:1000 dilution overnight at 4°C.

Secondary antibody: 1:10000 dilution using Goat Anti-Rabbit IgG H&L (HRP) (Cat# PHY6000).

Detection: using chemiluminescence substrate and image were captured with CCD camera.