

# Anti-Putative GTP diphosphokinase RSH1, chloroplastic antibody

Catalog: PHY2538S

## Product Information

<b>Description:</b>	Rabbit polyclonal antibody
<b>Background:</b>	The model plant <i>Arabidopsis</i> has four RSHs (RSH1, RSH2, RSH3 and CRSH). All of the RSHs are targeted to chloroplasts, although the possibility that they also function in other cellular components such as in mitochondria cannot be excluded. RSH1 may be involved in a rapid plant ppGpp (guanosine 3'-diphosphate 5'-diphosphate)-mediated response to pathogens and other stresses.
<b>Synonyms:</b>	RSH1, AT-RSH1, ATRSH1, RELA-SPOT HOMOLOG 1, RELA/SPOT HOMOLOG 1
<b>Immunogen:</b>	KLH-conjugated synthetic peptide (18 aa from Central section) derived from <i>Arabidopsis thaliana</i> RSH1 (AT4G02260).
<b>Form:</b>	Lyophilized
<b>Quantity:</b>	150 µg
<b>Purification:</b>	Serum Peptide affinity form antibody available upon request at <a href="mailto:info@phytoab.com">info@phytoab.com</a> .
<b>Reconstitution:</b>	Reconstitution with 150 µl of sterile water. "Note: please spin tube briefly prior to opening it to avoid any losses that might occur from lyophilized material adhering to the cap or sides of the tube".
<b>Stability &amp; Storage:</b>	Use a manual defrost freezer and avoid repeated freeze-thaw cycles. 12 months from date of receipt, -20 to -70°C as supplied. 6 months, -20 to -70°C under sterile conditions after reconstitution. 1 month, 2 to 8°C under sterile conditions after reconstitution.
<b>Shipping:</b>	The product is shipped at 4°C. Upon receipt, store it immediately at the temperature recommended above.

## Application Information

<b>Recommended Dilution:</b>	Western Blot (1:1000-1:5000) Note: Optimal dilutions/concentrations should be determined by the end user.
------------------------------	--

Research Use Only

**Expected / apparent MW:** 99 / 95 kDa

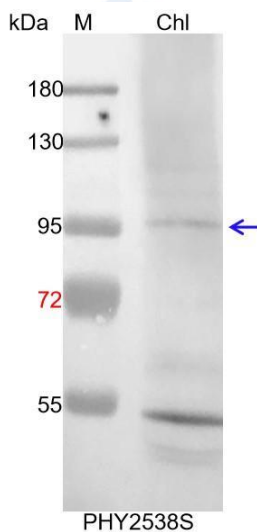
**Confirmed Reactivity:** *Arabidopsis thaliana*

**Predicted Reactivity:** Among species analyzed, the sequence of the synthetic peptide used for immunization is 100% homologues with the sequence in *Gossypium raimondii*, and 80-99% homologues with the sequence in *Zea mays*, *Glycine max*, *Brassica napus*, *Cucumis sativus*, *Oryza sativa*, *Triticum aestivum*, *Panicum virgatum*, *Hordeum vulgare*, *Sorghum bicolor*, *Setaria viridis*, *Solanum lycopersicum*, *Brassica rapa*, *Medicago truncatula*, *Nicotiana tabacum*, *Solanum tuberosum*, *Spinacia oleracea*.

For more species homologues information, please contact tech support at [tech@phytoab.com](mailto:tech@phytoab.com).

## Application Example

### Example 1:



Chl: 5  $\mu$ l total chloroplast protein from *Arabidopsis thaliana*.

**Electrophoresis:** 10% SDS-PAGE

**Transfer:** blotting to NC (nitrocellulose) membrane for 1 h.

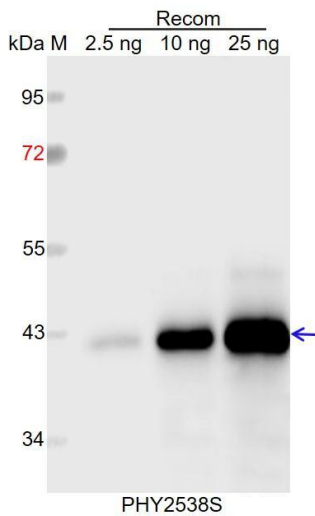
**Blocking:** 5% skim milk at RT or 4°C for 1 h.

**Primary antibody:** 1:5000 dilution overnight at 4°C.

**Secondary antibody:** 1:10000 dilution using Goat Anti-Rabbit IgG H&L (HRP) (Cat# PHY6000)

**Detection:** using chemiluminescence substrate and image were captured with CCD camera.

## Example2:



Recom: 2.5 ng, 10 ng and 25 ng recombinant protein containing the peptide for immunization and having a molecular mass of 42 kDa.

**Electrophoresis:** 12% SDS-PAGE

**Transfer:** blotting to NC (nitrocellulose) membrane for 1 h.

**Blocking:** 5% skim milk at RT or 4°C for 1 h.

**Primary antibody:** 1:1000 dilution overnight at 4°C.

**Secondary antibody:** 1:10000 dilution using Goat Anti-Rabbit IgG H&L (HRP) (Cat# PHY6000).

**Detection:** using chemiluminescence substrate and image were captured with CCD camera.