

Anti-CBL-interacting serine/threonine-protein kinase 14 antibody

Catalog: PHY3560S

Product Information

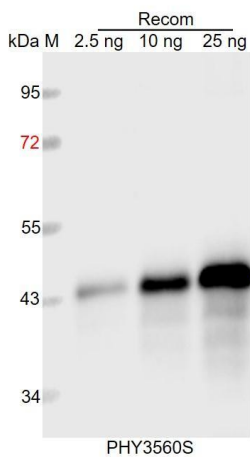
Description:	Rabbit polyclonal antibody
Background:	Calcium and protein kinase serve as the common mediators to regulate plant responses to multiple stresses including salt and ABA stimulus. CIPK14 transcripts, capable been checked in roots, stems, leaves and flowers, were highly expressed in flowers and roots. CIPK14 was induced by ABA and salt treatments. The disruption of CIPK14 altered the transcriptional pattern of a gene marker line related to ABA and salt responses, and the results suggested that CIPK14 probably was responsible to the control of the salt and ABA responses.
Synonyms:	SR1, ATCIPK14, ATSR1, CBL-INTERACTING PROTEIN KINASE 14, CIPK14, PKS24, SERINE/THREONINE PROTEIN KINASE 1, SNF1-RELATED PROTEIN KINASE 3.15, SNRK3.15, SOS2-LIKE PROTEIN KINASE 24
Immunogen:	KLH-conjugated synthetic peptide (17 aa from Central section) derived from <i>Arabidopsis thaliana</i> SR1 (AT5G01820).
Form:	Lyophilized
Quantity:	150 µg
Purification:	Serum
Reconstitution:	Peptide affinity form antibody available upon request at info@phytoab.com . Reconstitution with 150µl of sterile water. "Note: please spin tube briefly prior to opening it to avoid any losses that might occur from lyophilized material adhering to the cap or sides of the tube".
Stability & Storage:	Use a manual defrost freezer and avoid repeated freeze-thaw cycles. 12 months from date of receipt, -20 to -70°C as supplied. 6 months, -20 to -70°C under sterile conditions after reconstitution. 1 month, 2 to 8°C under sterile conditions after reconstitution.
Shipping:	The product is shipped at 4°C. Upon receipt, store it immediately at the temperature recommended above.

Application Information

Research Use Only

- Recommended Dilution:** Western Blot (1:1000-1:2000)
 Note: Optimal dilutions/concentrations should be determined by the end user.
- Expected / apparent MW:** 50 kDa
- Predicted Reactivity:** Among species analyzed, the sequence of the synthetic peptide used for immunization is 80-99% homologues with the sequence in *Brassica rapa*, *Brassica napus*.
 For more species homologues information, please contact tech support at tech@phytoab.com.

Application Example



Recom: 2.5 ng, 10 ng and 25 ng recombinant protein containing the peptide for immunization and having a molecular mass of 45 kDa.

Electrophoresis: 12% SDS-PAGE

Transfer: blotting to NC (nitrocellulose) membrane for 1 h.

Blocking: 5% skim milk at RT or 4°C for 1 h.

Primary antibody: 1:1000 dilution overnight at 4°C.

Secondary antibody: 1:10000 dilution using Goat Anti-Rabbit IgG H&L (HRP) (Cat# PHY6000).

Detection: using chemiluminescence substrate and image were captured with CCD camera.